

# MILILANI NEWS

MILILANI TOWN ASSOCIATION

AUGUST 2024



PROUDLY SPONSORS:

2024 MILILANI TOWN ASSOCIATION

# HOME EXPO



**CHECK OUT VALUABLE RESOURCES FOR ALL YOUR CURRENT & FUTURE HOME IMPROVEMENT NEEDS!**

**AUGUST 24 • 9AM - 3PM • REC 5**

MILILANI REC 5 | 95-1101 AINAMAKUA DR | MILILANI MAUKA  
FREE PARKING → FREE SHUTTLE FROM MILILANI PARK & RIDE  
SEE PAGES 16 & 17 FOR LIST OF EXHIBITORS, ACTIVITIES & FOOD VENDORS



wednesday  
**BINGO**  
august 7 | 9:00 AM - 11:00 AM | REG-CENTER 5

proudly sponsored by

Wai Kai



Permit No. 985  
Honolulu, HI  
U.S. Postage Paid  
Presorted Mktg

Mililani Town Association  
95-303 Kaloapau Street  
Mililani, Hawaii 96789



## MILILANI TOWN ASSOCIATION

TREE CITY USA (2018-2020) | 1986 NATIONAL CIVIC LEAGUE ALL-AMERICA CITY

### BOARD OF DIRECTORS

**PRESIDENT** | Bob Barrett  
**VICE PRESIDENT** | Michelle Kidani  
**SECRETARY** | Josie Hart Ka'anehe  
**TREASURER** | Neil Takeda

### DIRECTORS

Will Kane, Michael Magaoay, Noriko Salangdron,  
Roger Babcock, Val Aquino Okimoto

### MTA STAFF MANAGERS

#### GENERAL MANAGER

David O'Neal, CMCA, AMS, PCAM  
808-440-2614 | doneal@mililanitown.org

#### ASSISTANT GENERAL MANAGER COVENANTS & DESIGN MANAGER

Katherine Cueva, CMCA, AMS  
808-440-2622 | kcueva@mililanitown.org

#### CONTROLLER

Lynelle Tamashiro, CPA, CMCA  
808-440-2636 | ltamashiro@mililanitown.org

#### AQUATICS & SAFETY MANAGER

Kaleo Ferreira, CPO  
808-440-2632 | jperreira@mililanitown.org

#### MEMBER SERVICES MANAGER

Laurie Usui, CMCA, AMS  
808-440-2626 | lusui@mililanitown.org

#### CAFÉ MANAGER

Jessica Maclachlan  
808-440-2653 | jmaclachlan@mililanitown.org

#### LANDSCAPING MANAGER

Darryl Barbadillo, ISA Certified Arborist WE-4064A  
808-440-2638 | dbarbadillo@mililanitown.org

#### MAINTENANCE MANAGER

Roy Tashiro, CPO  
808-440-2611 | rtashiro@mililanitown.org



### MILILANI NEWS | AUGUST 2024

#### EVENT & NEWSLETTER SPECIALIST | Jennifer Suzuki

808-440-2624 | jsuzuki@mililanitown.org

#### MARKETING SPECIALIST | Ronna Derby

808-440-2618 | rderby@mililanitown.org

The Mililani News is a monthly publication of the Mililani Town Association. The publication is used to notify owners of community issues, changes in association policies, scheduled meetings, hearings, programs, classes, special events and activities, and for recognizing MTA members and employees for their achievements and outstanding service. MTA Management has the authority to approve or disapprove editorial submissions, materials, or advertisements. MTA does not endorse and is not responsible for the merchandise or services advertised in this publication. The Mililani News is mailed to residential properties in Mililani. If you are a homeowner who is renting your home to a tenant and live outside of Mililani, or you are a property manager or business owner in Mililani, you are welcome to view the monthly newsletter online. **If you are a property owner who would prefer to read the newsletter online, rather than receive it in the mail, call 808-623-7300 or send an email to jsuzuki@mililanitown.org to have your property address removed from the MTA newsletter mailing list.**

## PRESIDENT'S MESSAGE



Welcome to August, Mililani! Summer is in full swing! I hope you have the chance to participate in some fun summer family activities. It sure is hot out there but it is beautiful in the rec center pools and it's a great time to indulge in delicious shave ice!

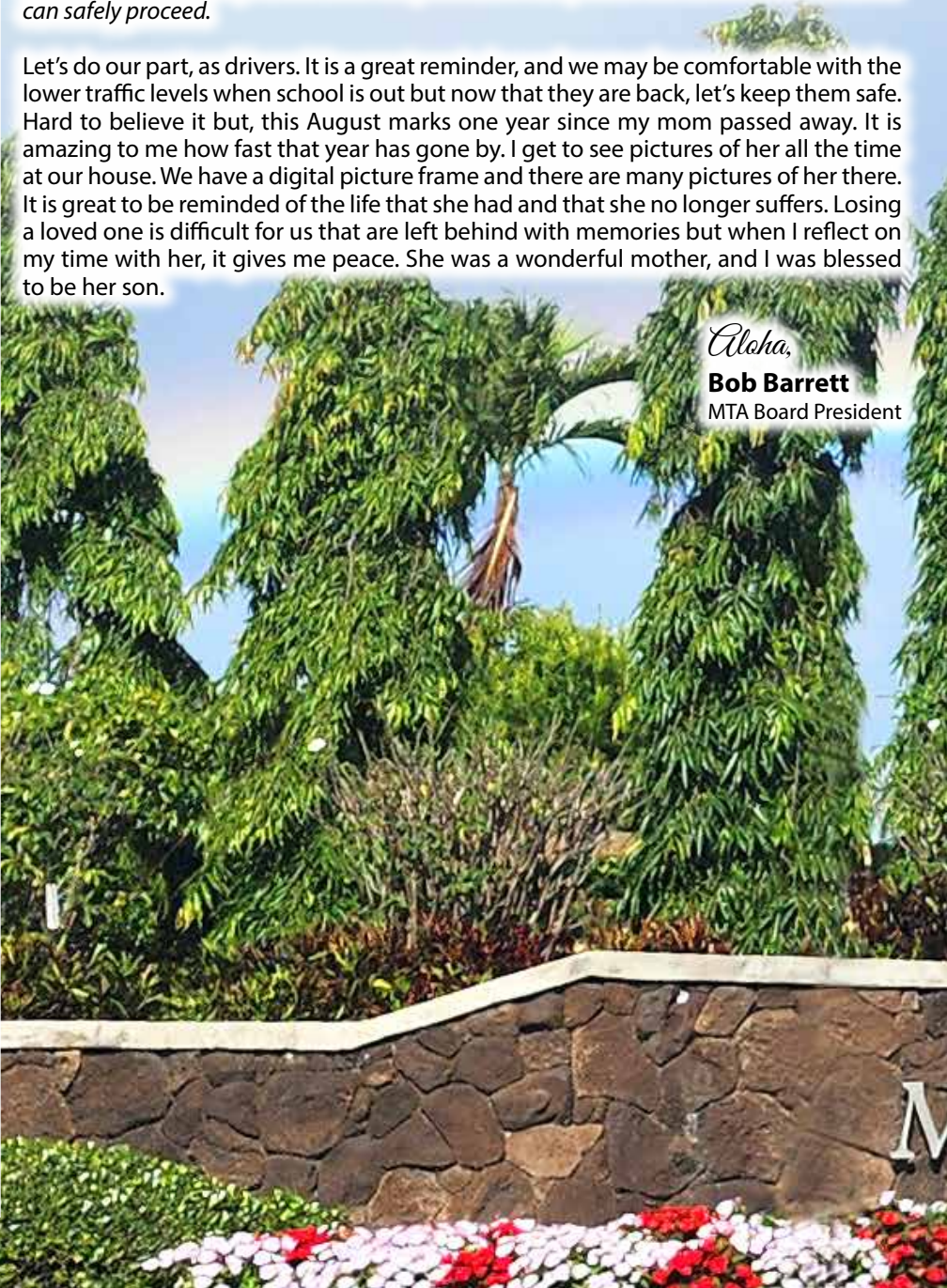
It is back to school time again! I know I have mentioned it previously, but it is worth mentioning again, please be mindful of pedestrians moving about and in crosswalks. Many of the people trying to cross the street are young kids and we need to watch after them, especially.

*§291C-72 Pedestrians' right-of-way in crosswalks. (a) The driver of a vehicle shall stop for a pedestrian who is crossing the roadway within a crosswalk when the pedestrian is either:*

- (1) Upon the half of the roadway upon which the vehicle is traveling; or*
- (2) Approaching the vehicle so closely from the opposite half of the roadway as to be in danger and shall not proceed until the pedestrian has passed the vehicle and the driver can safely proceed.*

Let's do our part, as drivers. It is a great reminder, and we may be comfortable with the lower traffic levels when school is out but now that they are back, let's keep them safe. Hard to believe it but, this August marks one year since my mom passed away. It is amazing to me how fast that year has gone by. I get to see pictures of her all the time at our house. We have a digital picture frame and there are many pictures of her there. It is great to be reminded of the life that she had and that she no longer suffers. Losing a loved one is difficult for us that are left behind with memories but when I reflect on my time with her, it gives me peace. She was a wonderful mother, and I was blessed to be her son.

*Aloha,*  
**Bob Barrett**  
MTA Board President



## MTA BUSINESS OFFICES

### ADMINISTRATIVE OFFICE

95-303 Kaloapau Street | Mililani, HI 96789  
808-623-7300 | Fax: 808-623-3474

Open Weekdays 8:00 am - 4:30 pm | Closed Weekends and Holidays

### REC CENTER 3 BUSINESS OFFICE

95-281 Kaloapau Street | Mililani, HI 96789  
808-440-2603

Open Daily: 7:00 am - 9:00 pm | **Last transaction at 8:45 pm**  
Cash, checks and credit cards accepted.

### REC CENTER 7 BUSINESS OFFICE

95-1333 Lehiwa Drive | Mililani, HI 96789  
808-440-2608

Open Daily: 7:00 am - 7:00 pm | **Last transaction at 6:45 pm**  
Cash, checks and credit cards accepted.

**AFTER-HOURS MTA EMERGENCY 808-440-2603**

## MEETING SCHEDULE

### MTA BOARD OF DIRECTORS

Third Wednesday of the month | 7:00 pm at Administrative Office Conference Room

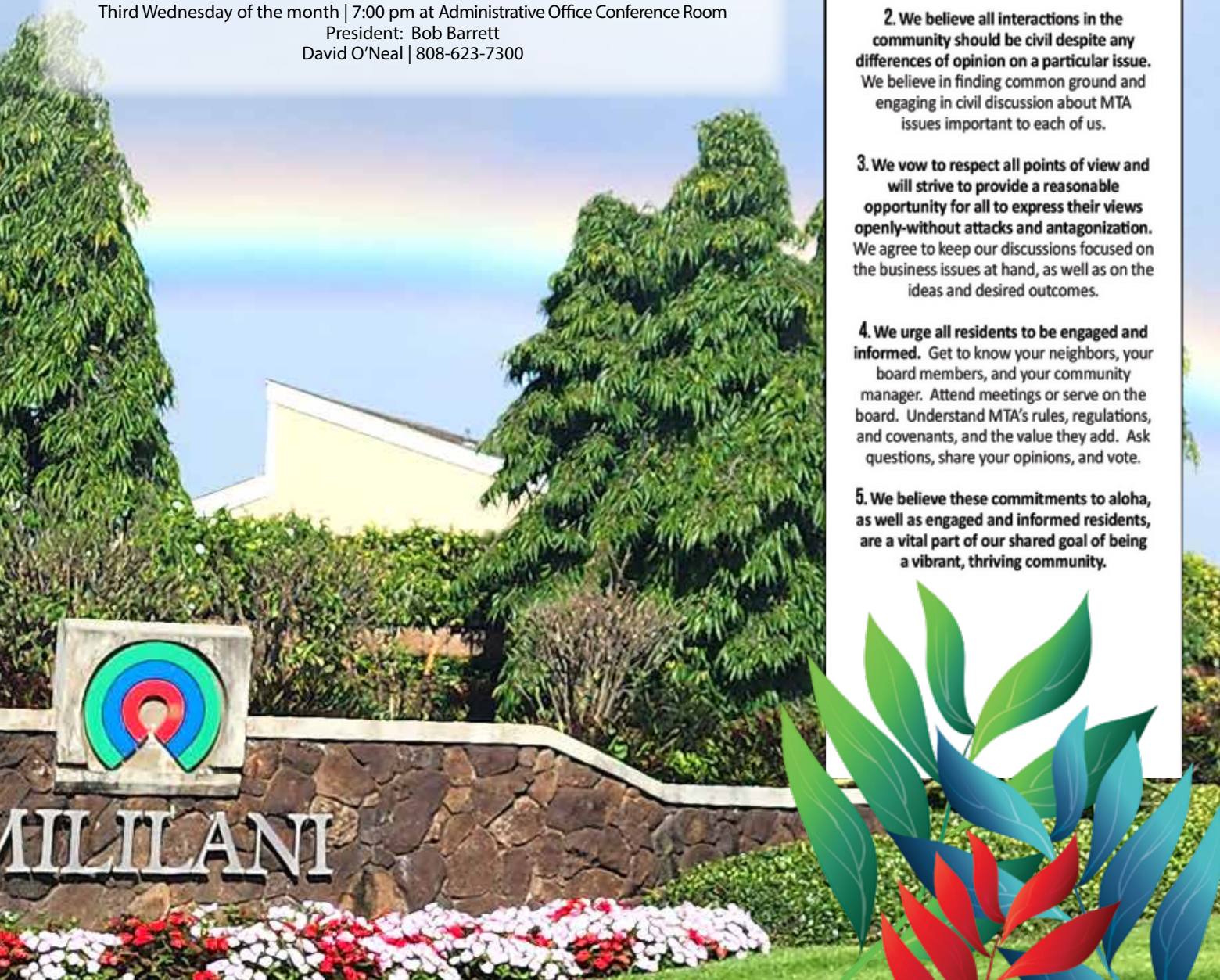
President: Bob Barrett  
David O'Neal | 808-623-7300

## MILILANI TOWN ASSOCIATION

# ALOHA PLEDGE

A commitment to fostering a climate of open discussion and debate, mutual respect, and tolerance between all who live in, work in, and visit the Mililani Town Association community.

- 1. We expect each individual**, whether a resident, guest, board member, MTA manager, staff member, business partner, or contractor, to be accountable for his or her own actions and words.
- 2. We believe all interactions in the community should be civil despite any differences of opinion on a particular issue.** We believe in finding common ground and engaging in civil discussion about MTA issues important to each of us.
- 3. We vow to respect all points of view and will strive to provide a reasonable opportunity for all to express their views openly-without attacks and antagonization.** We agree to keep our discussions focused on the business issues at hand, as well as on the ideas and desired outcomes.
- 4. We urge all residents to be engaged and informed.** Get to know your neighbors, your board members, and your community manager. Attend meetings or serve on the board. Understand MTA's rules, regulations, and covenants, and the value they add. Ask questions, share your opinions, and vote.
- 5. We believe these commitments to aloha, as well as engaged and informed residents, are a vital part of our shared goal of being a vibrant, thriving community.**



# HOMEOWNER ASSESSMENTS

The MTA quarterly assessment is collected in accordance with Article VI, Section 6.02 of the Mililani Town DCCR. **Assessment due dates are January 1st, April 1st, July 1st, and October 1st in the amount of \$145.00 per quarter (effective April 1, 2022).** Quarterly reminder notices are sent to homeowners. A \$10.00 late fee will be charged if payment is not received by the 10th of the month that payment is due.

## THERE ARE 5 WAYS TO PAY YOUR ASSESSMENTS:

1. **SurePay Payment Plan** - SurePay allows your bank to automatically, electronically transfer your quarterly assessment payments from your checking or savings account through Automated Clearing House (ACH) to MTA. Fill out a SurePay form and turn it in to one of our business offices or send it to [surepay@mililantown.org](mailto:surepay@mililantown.org). Submit a voided check with your form.

**DOWNLOAD THE SUREPAY FORM AT:**  
[mililantown.org/for-residents/assessments/](http://mililantown.org/for-residents/assessments/)

2. **Pay Online** - To safely pay your assessment online, homeowners must go through the official MTA website ([www.mililantown.org](http://www.mililantown.org)). Once on the official MTA home page, click on "Pay Assessments" in the top menu bar and you will be directed to the online payment page. Payments made through any other website is not recommended and are not guaranteed by MTA.

3. **Pay in Person** - Payments may be made at the Admin Office, Rec Center 3 or 7 Business Offices during their regular business office hours. Please bring your remittance stub with you when you make your payment.

4. **Use Our Secure Drop-Box** - There is a drop-box located inside the administration office and is only available during regular business hours.

5. **Pay by Mail** - To avoid late fees, please allow ample time for mail delivery and for your payments to post as received. Homeowners with multiple properties must submit a

separate remittance stub and payment, for each property address.

- If you are mailing a check with the remittance stub, please mail it to: Mililani Town Association, P.O. Box 29380, Honolulu, HI 96820-1780. This is a "Lockbox" service through Bank of Hawaii. Only the payment will be processed.
- If you are mailing a check without the remittance stub or with the remittance stub and other correspondence or enclosures (such as name or mailing address changes), please mail it to:

Mililani Town Association  
95-303 Kaloapau Street, Mililani, HI 96789



## GO ONLINE!

**MTA offers quick & easy ways to make assessment payments online with no fees!**

- **Make One-Time Payments Online**
- **Set Up Automatic Credit Card Payments**
- **Set Up Text & Email Notifications**

**Need Assistance?**

Email: [payonline@mililantown.org](mailto:payonline@mililantown.org)

[MILILANTOWN.ORG/FOR-RESIDENTS/ASSESSMENTS/](http://MILILANTOWN.ORG/FOR-RESIDENTS/ASSESSMENTS/)

Are you paying your assessments online? No longer want to receive paper statements in the mail?  
**Enroll to receive a PDF statement each quarter via email.**

## GO PAPERLESS

### HERE'S HOW TO SIGN UP

1. Go to [www.mililantown.org/for-residents/assessments/](http://www.mililantown.org/for-residents/assessments/)
2. Click on the link to sign up, enter your account (include 3 leading zeros), street number (94 or 95) and your e-mail address.
3. You will receive an e-mail with an activation link for confirmation. Click that link, and you are enrolled!

## MTA QUARTERLY ASSESSMENTS | SUREPAY AUTOMATIC PAYMENT FORM

To **enroll or update** your SurePay automatic payment plan, please follow the steps below.

1. **Must have a zero balance and be in good standing.**
2. Complete the Authorization Form below.
3. Complete one form per property.
4. Attach a voided check for checking account or a copy of your bank statement for savings accounts.
5. Submit the completed application to:

**Mail:** Mililani Town Association | Attn: Accounting Dept. | 95-303 Kaloapau Street | Mililani, HI 96789

**Fax:** (808) 623-3474

**Email:** [surepay@mililantown.org](mailto:surepay@mililantown.org)

Please review your bank statement for your SurePay payments. Authorization form must be received by the 1st of the preceding month to be effective for the upcoming quarter. (e.g. Due 12/1/2023 for 1/1/2024 quarterly assessments) A confirmation letter from Mililani Town Association will be sent to you. If you have questions, please call our Accounting Department at (808) 623-7300 or email [surepay@mililantown.org](mailto:surepay@mililantown.org). Please visit our website for frequently asked questions.

**Owner Name(s):** \_\_\_\_\_

**Email Address:** \_\_\_\_\_

**Phone Number:** \_\_\_\_\_

**MTA BUR Number (10-xxx-xxxx-xx):** \_\_\_\_\_

**Property Address:** \_\_\_\_\_

**Name of Financial Institution:** \_\_\_\_\_

**Account Type:**  **Checking (voided check required)**  **Savings**

**Bank Account Number:** \_\_\_\_\_ **9-Digit Routing Number:** \_\_\_\_\_

**Authorized Signature:** \_\_\_\_\_ **Date:** \_\_\_\_\_ **Account Holder (Please Print):** \_\_\_\_\_

I authorize Mililani Town Association as Agent for the financial institution named above to initiate transfers from my account to pay for my quarterly assessments. I understand that quarterly assessments will be automatically deducted on a recurring basis from my checking or savings account the 5th day of each quarter. If the 5th shall fall on a weekend or holiday, payment will be deducted on the next business day.

I understand that there will be a \$20.00 return check fee for SurePay payments that cannot be processed due to insufficient funds, stop payments, or account closures. This authorization will remain in effect until terminated by myself or by Mililani Town Association. If Mililani Town Association wishes to terminate services, a notification letter will be sent.

To terminate SurePay, I understand that I must complete and submit the SurePay Cancellation form to Mililani Town Association by the 28th of the preceding month to terminate services for the upcoming quarter. If it is received after the 28th, SurePay will be terminated on the next payment cycle. (e.g. Due 12/1/2023 for 1/1/2024 quarterly assessments).

Rev. 20220506

# Locations

**Your Trusted MILILANI Neighborhood Experts**

For the latest Mililani listings and market statistics, call or stop by today!

# 13

YEARS IN A ROW  
FIRST PLACE  
HAWAII'S  
BEST  
2023  
Awarded by the StarAdvertiser



**Allyson N Riter**  
REALTOR® | RB-20962  
808-371-3889



**Bruce W Yanagihara**  
REALTOR®, PARTNER  
RB-7869  
808-381-3435



**Cameron Chan**  
REALTOR-ASSOCIATE®  
RS-84371  
808-561-0642



**Carolina Cristancho**  
REALTOR-ASSOCIATE®  
RS-69298  
808-375-1580



**Dan Koyamatsu**  
REALTOR-ASSOCIATE®  
RS-53022  
808-542-9750



**Darryl Macha**  
REALTOR® | RB-20541  
808-352-6458



**Jana Tano**  
REALTOR-ASSOCIATE®  
RS-65985  
808-741-1036



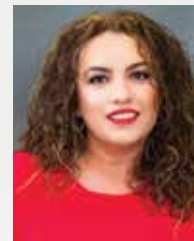
**Jessica Lesher**  
REALTOR-ASSOCIATE®  
RS-85534  
808-782-4989



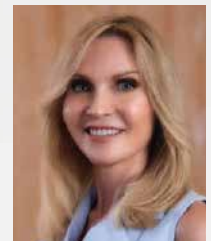
**Kimiko May**  
REALTOR® | RB-20946  
808-228-3472



**Leesa Fergerstrom**  
REALTOR-ASSOCIATE®  
RS-76263  
808-640-9522



**Lore Woodley**  
REALTOR® | RB-22039  
808-393-5892



**Michelle Takushi**  
REALTOR-ASSOCIATE®  
RS-71963  
808-230-4558



**Paige M Iwanaga**  
REALTOR-ASSOCIATE®  
RS-62461  
808-220-8363



**Priscilla Walthouse**  
REALTOR®, PARTNER  
RB-21578  
808-782-4545



**Priscilla Wassman**  
REALTOR-ASSOCIATE®  
RS-85807  
808-825-3602



**Richard O Linke Jr.**  
REALTOR-ASSOCIATE®  
RS-74730  
808-673-8681



**Robyn Kauka**  
REALTOR-ASSOCIATE®  
RS-62625  
808-779-6961



**Rose Ancheta**  
REALTOR-ASSOCIATE®  
RS-60072  
808-397-6199



**Sandy Takeda**  
REALTOR-ASSOCIATE®  
RS-79515  
808-227-2418



**Stacey L. Waiwaiole**  
REALTOR-ASSOCIATE®  
RS-69169  
808-429-8332



**Ty Y Takamoto**  
REALTOR-ASSOCIATE®  
RS-78182  
808-783-4461

## Locations

808-735-4200



SCAN HERE to see the latest  
Mililani listings.

[LocationsHawaii.com](https://LocationsHawaii.com)



©2024. Equal Housing Opportunity. If your property is listed by a real estate broker, please disregard. It is not our intention to solicit the offerings of other real estate agents. We will be happy to work with them and cooperate fully. Data displayed was compiled from public and private sources. While every precaution was taken while compiling data, errors may have occurred. Locations does not warrant, guarantee or make any representations regarding the use or result of use, of this data or related materials in terms of completeness, accuracy, reliability, currentness or otherwise.

## IMPORTANT NOTICE: RULES AND ENFORCEMENT AT OUR FACILITIES



**Parents and Guardians, we need your help.** Now that school is back in session, we have seen an increase of our MTA staff issuing warnings to school aged members at our recreation centers. Warnings include use of profane language, bullying other members, running and screaming in the facilities, not cleaning up after themselves (example: leaving empty saimin bowls and drinks in the facility), abuse of MTA recreation equipment, rough-housing and “bombing” in the pools. MTA staff are instructed to give two warnings. The third warning will result in being ejected from the premises and parents being called. This is a daily routine for MTA staff, especially at Recreation Center 7.

### PARENTS/GUARDIANS: PLEASE SPEAK TO YOUR CHILDREN WHEN SENDING THEM OR DROPPING THEM OFF AT THE FACILITIES

#### Per the Mililani Town Rules

Section C-8: “Any person using the facilities agrees to abide by the MILILANI TOWN RULES and instructions of MTA Staff on duty as a condition of remaining on the premises.”

Section J-1: “Violation of any of the MILILANI TOWN RULES while using any of the Mililani Recreation Centers will result in two verbal warnings before being ejected from the premises. The individual will be refused Recreation Center use privileges for a period of 48 hours. Any activity that is dangerous to an individual or others and/or illegal will not require any warning and will result in immediate ejection from the premises. (If the individual refuses to vacate the premises as requested, HPD will be summoned, and the violator charged with ‘trespassing’).”

Section J-4: “Any repetition of the same violation will not require warning before being ejected from the premises. Additional penalties imposed may be more severe including, but not limited to, suspension of all privileges for a longer period as determined by the General Manager”.

**KEIKI FAIR**  
OCTOBER 19 • 10 AM - 3 PM • REC 7

**KEIKI FAIR VENDOR  
REGISTRATION  
NOW OPEN!**

KEIKI ENTREPRENEURS  
CRAFT & FOOD VENDORS  
KEIKI ACTIVITY VENDORS

VISIT: [MILILANITOWN.ORG](http://MILILANITOWN.ORG)  
OR EMAIL [JSUZUKI@MILILANITOWN.ORG](mailto:JSUZUKI@MILILANITOWN.ORG)  
FOR MORE INFORMATION.



Stay  
**CONNECTED**  
to your **HEALTH**  
team.

With virtual urgent care, you can connect with a health care professional for conditions that are not life threatening but need medical attention right away. Log on through your computer or device.

[HawaiiPacificHealth.org/VirtualUrgentCare](http://HawaiiPacificHealth.org/VirtualUrgentCare)

**HAWAII  
PACIFIC  
HEALTH** | KAPI'OLANI  
PALI MOMI  
STRAUB  
WILCOX

CREATING A HEALTHIER HAWAII

# COMMENT, QUESTION OR CONCERN? CONTACT US @ MTA!

Send us an email or visit [mililantown.org/contact](http://mililantown.org/contact)

## [accounting@mililantown.org](mailto:accounting@mililantown.org)

- Assessment accounts & payments
- Ownership changes
- Request for account ledgers

## [admin@mililantown.org](mailto:admin@mililantown.org)

- Facility rentals • Disclosure docs requests
- Marketing questions • Membership information
- Independent contractors • Special Events
- Tiny Tots/Senior Program

## [aquatics@mililantown.org](mailto:aquatics@mililantown.org)

Questions Regarding: Pools, Aquatic Classes & Aquatic Programs

## [covenants@mililantown.org](mailto:covenants@mililantown.org)

Questions Regarding: Rules or Violations

## [design@mililantown.org](mailto:design@mililantown.org)

Questions Regarding: Design Applications or to submit design applications

## [landscaping@mililantown.org](mailto:landscaping@mililantown.org)

Questions Regarding: Landscaping

## [payonline@mililantown.org](mailto:payonline@mililantown.org)

- Inquiries regarding paying your assessments on our website
- Assistance logging into our online payment system
- Assistance paying assessments online
- Assistance setting up automatic payments online

## [support@mililantown.org](mailto:support@mililantown.org)

- To submit completed Online Registration Access Form – WebTrac
- WebTrac Support

# aloha! NEW NEIGHBOR!

We are thrilled to announce that **Coldwell Banker Island Properties** is moving into the Mililani Town Center this August. With an incredible lineup of agents, neighborhood insights, and sales excellence, we look forward to partnering with you for all your Mililani real estate and property management needs.

Proudly representing more sellers than any other brokerage.

KAUAI | OAHU | MILILANI | MAUI | BIG ISLAND

ISLANDPROPERTIES.COM



**Shari-Lynne K. Aguilar**  
(808) 216-2356  
RS-76855



**Denise M. Fisher**  
(808) 282-8006  
RS-64615



**Jocelyn Okudara**  
(808) 864-3571  
RS-53488



**Lester A. Salazar**  
(808) 427-1888  
RB-23849



**Kim Shimonishi**  
(808) 222-8227  
RB-22485



**Davilyn Yrojo**  
(808) 542-9195  
RB-22766

**Ward Soto (R)**  
 ABR AHWD CNE e-PRO MRP  
 Principal Broker  
 License #RB-22593  
 808-372-7299  
 wardsoto.PLP@yahoo.com

**Leona E. Soto (R)**  
 CRB CRS e-PRO GRI MRP SFR SRES  
 Broker-in-Charge  
 Notary Public  
 License #RB-12430  
 808-780-2170  
 leonasoto@aol.com

**CALL US FOR A FREE CONSULTATION!**

## FOR YOUR SAFETY:

### **PLEASE WALK & RUN ON THE SIDEWALK**

We are fortunate to have beautiful landscaping and clean and safe sidewalks in Mililani. Please be safe and take advantage of the sidewalks instead of walking, running or playing on the roadways.

#### **IT'S THE LAW:**

The Pedestrian law 291C-76(a) states: (1) Where sidewalks are provided, it is unlawful for any pedestrian to walk along and upon adjacent roadway, bicycle lane, or bicycle path. (2) Where sidewalks are not provided, pedestrians walking along and upon any roadway, when practical, walk only on the left side of the roadway or it's shoulder facing traffic from the opposite direction.

### **SAFETY TIPS** FROM THE ROAD RUNNERS CLUB OF AMERICA:

- **DON'T WEAR HEADPHONES AND ALWAYS STAY AWARE OF WHAT'S HAPPENING AROUND YOU.**
- **OBEY TRAFFIC SIGNS AND SIGNALS AND LOOK BOTH WAYS BEFORE CROSSING AT A CROSS WALK.**
- **WEAR REFLECTIVE MATERIAL OR LIGHT COLORED CLOTHES IF YOU MUST RUN BEFORE DAWN OR AFTER DARK.**
- **RESPECT PRIVATE PROPERTY AND PLEASE DON'T LITTER.**



## **Students First, Values Matter**

Cultivating values-driven students who go forward with confidence to positively impact our world.

Island Pacific Academy inspires students to think critically, solve problems creatively, and adapt to the dynamic demands of an ever-evolving world. We provide a nurturing, values-based education in a safe environment that lays the foundation for future success.



JOIN US FOR  
 2024-2025



**ISLAND PACIFIC ACADEMY**  
 WHERE VALUES MATTER

islandpacificacademy.org

Grades K-12 | 909 Haumea Street • Kapolei | 808.674-3563 | Financial aid available







# NEXT STEP

(C-39101)

## ROOFING & CONTRACTING LLC

Owners are Mililani Residents

**SERVICES INCLUDE:**

- Complete Re-Roofing
- Energy-Efficient Roofing Options
- Restoration and Maintenance
- Gutter Servicing



**BEFORE**



**AFTER**



**BEFORE & AFTER**

**Contact us TODAY for a FREE Estimate!!**

# Call (808) 486-5555

Lic. #C-25781

# FORD

## PAINTING PROFESSIONALS

RESIDENTIAL • COMMERCIAL • LICENSED • INSURED




## WE DO MORE THAN JUST PAINT YOUR HOUSE!

**SERVICES**

- Carpentry
- Water rot restoration
- Interior & exterior painting
- Garage floor coatings
- Deck sealing and waterproofing

Whether you need work on new construction or some minor remodeling,

FORD PAINTING PROFESSIONALS

can do it! Locally owned and operated. Great pricing, service, and our knowledgeable staff works with you at your convenience.

**FREE ESTIMATE**

### \$1000 OFF

+\$200 OFF FOR VETERANS  
+\$150 OFF FOR SENIORS

START TO FINISH WE DO THE JOB RIGHT

Call on us ANYTIME for a FAST & FREE estimate!




## 808-216-0272

WWW.FORDPAINTINGPROSINC.COM

**MONTHLY COVENANTS INSPECTIONS**

In an effort to be proactive with our homeowners, MTA wants to inform everyone of the areas that are being inspected each month. The areas highlighted on this map are the areas scheduled for routine Covenant inspections for this month.

We hope to reduce the amount of violation letters we have to send out, by giving you an advance notice of where we will be. We are not trying to do our inspections in secret. We may be seen in an area that is NOT scheduled for a routine inspection. The reason is usually because we have a re-inspection, a complaint or a design project inspection in that area. Please remember, if you have any questions, please feel free to ask. We are very friendly and very willing to talk to you.

**INSPECTION SCHEDULE (Subject to change):**

**JANUARY | APRIL | JULY | OCTOBER: BLUE MAP**

**FEBRUARY | MAY | AUGUST | NOVEMBER: RED MAP**

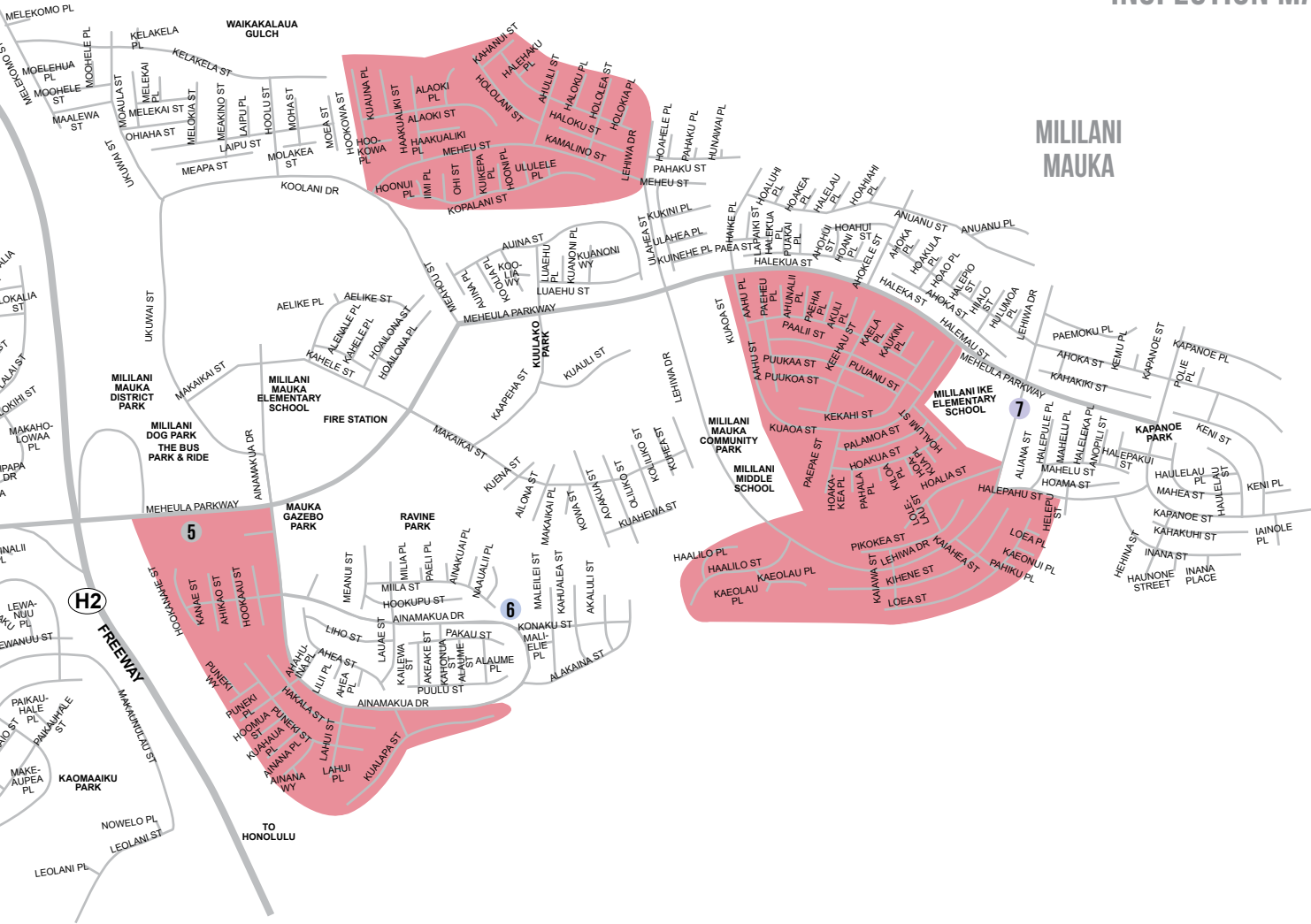
**MARCH | JUNE | SEPTEMBER | DECEMBER: GREEN MAP**



**MILILANI TOWN ASSOCIATION FACILITY LOCATIONS**

- ADMIN OFFICE AT REC 3** | 95-303 Kaloapau Street, Mililani Town
- RECREATION CENTER 1** | 95-400 Ikaloa Street, Mililani Town
- RECREATION CENTER 2** | 94-300 Anania Drive, Mililani Town
- RECREATION CENTER 3** | 95-281 Kaloapau Street, Mililani Town
- RECREATION CENTER 4** | 94-233 Makapipipi Street, Mililani Town
- RECREATION CENTER 5** | 95-1101 Ainamakua Drive, Mililani Mauka
- RECREATION CENTER 6** | 95-1010 Konaku Street, Mililani Mauka
- RECREATION CENTER 7** | 95-1333 Lehiwa Drive, Mililani Mauka

# AUGUST 2024 COVENANTS INSPECTION MAP

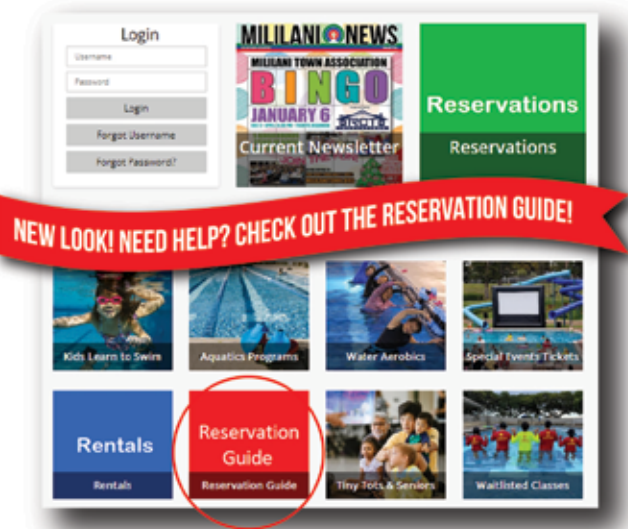


## AUGUST HERBICIDE SCHEDULE

\*Dates subject to change due to weather or other circumstances.

MONDAY	TUESDAY	WEDNESDAY	THURSDAY	FRIDAY
			<b>1</b> Slug bait on ground covers on Meheula between Kamaio St and Park	<b>2</b> Slug bait on ground covers Meheula between Marketplace and Lanikuhana
<b>5</b> Slug bait on ground covers Meheula between Hokuahiahi St. and Kamehameha Hwy.	<b>6</b> Slug bait on ground covers Meheula between Anania Dr. and Hikikaulia, Hikikaulia between Meheula and Makaimoimo St., Lanikuhana between Anania and Kamehameha Hwy.	<b>7</b> Slug bait on ground covers Lanikuhana between Lanikuhana Pl. and Kealakea St.	<b>8</b> Slug bait on ground covers Lanikuhana between Wailea Pl. and Makohilani St.	<b>9</b> Slug bait on ground covers Lanikuhana between Kamehameha Hwy. and Anania Dr.
<b>12</b> Slug bait on ground covers Lanikuhana between Anania Dr. and Makaimoimo St.	<b>13</b> Slug bait on ground covers Lanikuhana between Makaimoimo St. and Mililani Terrace	<b>14</b> Slug bait on ground covers Kuahealani between Lanikuhana and Hokuahiahi St. both sides	<b>15</b> Slug bait on ground covers Kuahealani between Kaopua Lp. and Kamehameha Hwy.	<b>16 HOLIDAY</b> Statehood Day
<b>19</b> Slug bait on ground covers Meheula between Kuahealani and Hookelewa St.	<b>20</b> Slug bait on ground covers Makaanulau St.	<b>21</b> Slug bait on ground covers Ainamakua Dr. between Rec 5 and Konaku St.	<b>22</b> Slug bait on ground covers Konaku St. both sides, Rec 6, Ainamakua Dr. between Rec 6 and Hampton Court	<b>23</b> Slug bait on ground covers Ainamakua Dr. between Hampton Court and Lauae St., Kaapeha both sides
<b>26</b> Slug bait on ground covers Rec 7, Meheula between Rec 7 and Kapanoe St., Meheula between Kapanoe and Ahokele St.	<b>27</b> Slug bait on ground covers Halepahu St, Meheula between Kapanoe and Ahokele St.	<b>28</b> Slug bait on ground covers Kuaoa St. between Meheula and Paalii St.	<b>29</b> Slug bait on ground covers Meheu St. between Lehiwa Dr. and Koolani St. both sides	<b>30</b> Slug bait on ground covers Hoolu St. both sides, Ukuwai Park, Ukuwai St. both sides

# WEBTRAC: WHAT'S NEW & LEARN TO NAVIGATE WEBTRAC FASTER & EASIER!



**HOW TO ACCESS WEBTRAC:**  
 Go to **MILILANTOWN.ORG**  
 Click WebTrac on top menu  
 OR  
**GET THE NEW APP!**  
 Access WebTrac functions in  
 bottom menu options.

Any additional questions regarding WebTrac or WebTrac registration can be emailed to:  
**support@mililantown.org**

DOWNLOAD FOR WEBTRAC ACCESS FORM ALSO AVAILABLE AT MILILANTOWN.ORG  
 (SEE QUICK LINKS UNDER WEBTRAC MEMBER LOGIN)

**WHAT IS WEBTRAC?** WebTrac is a system that will enable you and your household members on-line for programs and activities offered by Mililani Town Association.

**WHAT CAN I DO WITH WEBTRAC?**  
 Browse activities by type, age range, Rec Center and look up details about MTA classes (prices, dates, times, locations...)

**WHAT TYPE OF RESERVATIONS AND CLASSES CAN I SIGN UP FOR?**  
 Pickleball and Tennis Courts • Facility Rentals • Lap Swim Lanes • Pavilion Rentals • Aquatics Programs  
 Water Aerobics Punch Cards • Special Events Tickets • Tiny Tots • Senior Program

**IN ADDITION, WEBTRAC ALLOWS REGISTERED MEMBERS TO:**  
**Renew Membership** (without going to the Business Office!), print a transaction history and reprint old receipts.

**HOW DO I GET A USER NAME AND PASSWORD?**  
 If you are a Mililani Town Association property owner, fill out the WebTrac Access Form below (download also available online at mililantown.org). Submit completed & signed form via email to support@mililantown.org, fax it to 808-623-3474, mail it to Mililani Town Association (Attn. IT Department, 95-303 Kaloapau Street, Mililani, HI 96789) or drop it off at the Business Office at Rec 3 or Rec 7.

**WHAT IF I HAVE FORGOTTEN MY USER NAME OR PASSWORD?**  
 Click on "Forgot your password" below the Member Login. It will ask for your email address and a link will be sent to it. You must use the email address associated with your account.

**ARE MY TRANSACTIONS SECURED?**  
 Yes. WebTrac uses a secure server with industry-standard encryption to process all transactions.

**WHAT CREDIT CARDS DO YOU ACCEPT FOR ONLINE PAYMENTS?**  
 We accept Visa, MasterCard or Discover.

**IF I DO NOT LIVE IN A MTA PROPERTY, CAN I STILL SIGN UP FOR WEBTRAC?**  
 No. You must be a Mililani Town Association Owner or Tenant (head of household).

**WHAT TIME DOES LAP SWIM LANES, PICKLEBALL COURTS AND TENNIS COURTS OPEN FOR RESERVATIONS?**  
 6:00 a.m. Keep in mind, you are only able to reserve three days out.

**DOES MY CARD HAVE TO BE VALID IN ORDER TO MAKE A RESERVATION?**  
 Yes. If it's expired, you may renew it online under MY ACCOUNT.

## Mililani Town Association Online Registration Access Form | WEBTRAC | Updated: July 2024

Name: \_\_\_\_\_  
**MTA HOMEOWNER or TENANT listed as Head of Household ONLY**

Property Address: \_\_\_\_\_

Home Owner/Tenant Email Address ONLY: \_\_\_\_\_  
**Only ONE email per household**

SIGNATURE: \_\_\_\_\_

Date: \_\_\_\_\_

Phone Number: \_\_\_\_\_

**IMPORTANT:**

- Access is only granted to valid MTA Members.
- For Homeowners Only: All correspondence will be forwarded to the email address listed above.
- Hall Rentals: Only the MTA homeowner listed on the property deed, or an MTA valid tenant listed as "Head of Household" may rent a hall and is required to be at the event at all times including check-in/check-out.
- Please allow 3-5 business days for processing.

**SUBMIT FORM:**

**EMAIL** support@mililantown.org  
**MAIL** Mililani Town Association | Attn. IT Department | 95-303 Kaloapau Street | Mililani, HI 96789  
**FAX** 808-623-3474  
**DROP OFF** Admin Office (95-303 Kaloapau Street), Rec 3 Business Office (95-281 Kaloapau Street) or Rec 7 Business Office (95-1333 Lehiwa Drive)

For Office Use Only: Staff Initial: \_\_\_\_\_ Date: \_\_\_\_\_

# WEBTRAC

## EVENT TICKET GUIDE

### STEP 1: YOU NEED A VALID WEBTRAC ACCOUNT

Members need a WebTrac account to access event tickets, facility rentals, aquatics programs, etc.

**DON'T HAVE ONE?** See page 12 for more information.

Accounts can only be created during business hours (Monday - Friday 8:00 am - 4:30 pm, not including holidays)

Be sure to activate and test access to your WebTrac account **BEFORE** the ticket date/time.

Please resolve any login issues prior to ticket availability.

### STEP 2: SEE EVENT AD FOR TICKET DATE & TIME

Event/Ticket information is available in advance on event ads/flyers posted at Rec Centers, in your current MILILANI NEWS & at [mililantown.org/special-events/](http://mililantown.org/special-events/)

### STEP 3: HOW TO ACCESS EVENT TICKETS

On your desktop or mobile phone, go to:

[mililantown.org/special-events/](http://mililantown.org/special-events/)

Link to tickets will be available within the event description.

OR through WebTrac Page → Special Events-Tickets Link



Format may vary

OR access tickets on the **NEW MTA Mobile App!** Just click the "Events" button & use WebTrac to access tickets.



### STEP 4: HOW TO PURCHASE TICKETS

Find the event/time & add to cart if it's available.

You will need to login to your WebTrac account before you are able to select tickets & check out.



EXAMPLE ONLY  
Format may vary

**TICKETS WILL BE SENT TO YOUR EMAIL**

**TICKETS SELL OUT FAST SO PLAN ACCORDINGLY**

### STEP 5: TICKETS AT THE EVENT

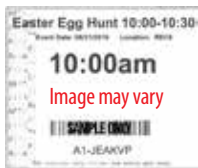


Image may vary

Please be sure to bring your **TICKETS** with the barcode to the event. Plan to arrive at least 15 minutes prior to event start to allow for check in. Events start promptly at start time.

WebTrac Questions? [support@mililantown.org](mailto:support@mililantown.org)  
Event Questions? [jsuzuki@mililantown.org](mailto:jsuzuki@mililantown.org) or [jprattbaptista@mililantown.org](mailto:jprattbaptista@mililantown.org)

# Call us for our **BIGGEST Discount Ever!** **BIGGER DISCOUNT FOR SENIORS!**

BUY LOCAL





**(808) 593-2000**  
Windward (808) 263-1252  
Leeward (808) 456-4892  
Honolulu (808) 396-0971



**\$3500 OFF**

ASK ABOUT BIG CITY DINER'S SPECIAL!

BUY LOCAL



**SIDING**

**#1 Hawaii's Windows & Siding Showroom**

**HOME WHERE VINYL IS FINAL**  
Serving Hawaii for over 60 Years with Thousands of Satisfied Customers

[www.twoahu.com](http://www.twoahu.com)

VISIT OUR SHOWROOM:  
1351 S. Beretania St.,  
Honolulu, HI 96814

# Call us today for our **DESIGN SPECIALS for SENIORS** **Bigger Discounts for Seniors**

BUY LOCAL




**(808) 593-2000**  
Windward (808) 263-1252  
Leeward (808) 456-4892  
Honolulu (808) 396-0971



**\$3500 OFF**

ASK ABOUT BIG CITY DINER'S SPECIAL!

BUY LOCAL



**CONVERT TUB TO SHOWER IN DAYS!**



**NEW MILDEW FREE!**

**FREE** Handi-bars with any Shower/Tub Conversions

**NON SLIP FLOOR**

**OVER 20,000 Satisfied Customers**  
**(808) 593-2000**

Serving Hawaii for over 60 Years with Thousands of Satisfied Customers

[www.twoahu.com](http://www.twoahu.com)

VISIT OUR SHOWROOM: 1351 S. Beretania St., Honolulu, HI 96814

**HAWAII'S BEST 2023**

**HAWAII'S BEST 2022**

**HAWAII'S BEST 2021**

**HAWAII'S BEST 2020**

**HAWAII'S BEST 2019**

**HAWAII'S BEST 2018**

**HAWAII'S BEST 2017**

**HAWAII'S BEST 2016**

**HAWAII'S BEST 2014**

MTA SPECIAL EVENTS RECAP | 5/4 SENIOR FAIR | 5/18 MOVIE NIGHT: WONKA | 6/1 MTA FOOD & MUSIC SHOWCASE



**5/4/2024 SENIOR FAIR at Rec 5** - This event continues to be a fun and exciting community favorite! Mahalo to those who attended and to all of the wonderful companies, community partners and vendors that gathered together to offer our kupuna and their families a variety of information, tips and activities! We hope you all had an enjoyable day!

**5/18/2024 MOVIE NIGHT | WONKA at Rec 7** - Who can make the sun rise? MTA Movie Night! With relatively clear skies, yummy bentos from Rice Box Cafe, delicious treats from RCT Innovations & NOMS, plus fresh popcorn by Next Step Roofing & Contracting LLC - our MTA Families watched the origin of the original candy man - Wonka!

**6/1/2024 MTA FOOD & MUSIC SHOWCASE at The Rec 7 Pavilions** - What a night! Mahalo to all who attended and enjoyed tantalizing offerings from Hawaii's hottest restaurants and culinary vendors, complimentary wine and beer tasting, and the melodious voice of Mark Yamanaka under Mililani skies at the Rec 7 Pavilions.

**MAHALO TO OUR SPONSORS!**

Susan Yanabu Ihle, State Farm Agent  
 AquaRev Water Tech Inc.  
 CapTel Outreach | Walmart of Mililani  
 Caresift | Humana MarketPOINT, Inc.  
 GYMGUYZ | Kaiser Permanente  
 Menehune Water | The Super Patch Co.  
 Estate Planning of Honolulu,  
 Atty Michael J. Madison  
 Ashley Gundaker, State Farm Agent  
 Financial Benefits Insurance, Inc.  
 Miracle Ear | Wilson Care Group  
 Homes of Hawaii Real Estate | NOMS  
 Premier Benefit Consultants  
 The Organized Spruce LLC



THIS 17th BINGO EVENT IS PROUDLY SPONSORED BY:



Wai Kai



SUSAN YAMABU IMLE, STATE FARM AGENT  
BERNADETA ANTOS, HUMANA MARKETPOINT  
WALMART OF MILILANI • POPEYE'S HAWAII  
STICKY FINGERS SNACKS

wednesday

# BINGO

august 7 | 9:00 AM - 11:00 AM | REC CENTER 5



**tickets available on webtrac 8/2 at 10 am**

START YOUR WEDNESDAY MORNING WITH 11 EXCITING ROUNDS OF BINGO - 5 STAND UP, 5 STANDARD + 1 BLACKOUT

ACTIVE WEBTRAC ACCOUNT REQUIRED PRIOR TO TICKET DATE TO PURCHASE TICKETS

TICKET REQUIRED TO RECEIVE BINGO PACKET. ONE-TIME SLOT PER HOUSEHOLD. ONE BINGO PACKET PER PLAYER.

PLEASE ARRIVE AT LEAST 15 MINUTES BEFORE TICKETED TIME TO CHECK IN. GAME WILL BEGIN PROMPTLY AT START TIME.

VISIT  
**MILILANI  
TOWN  
.ORG**  
FOR TICKET AVAILABILITY

THIS MTA EVENT IS PROUDLY SPONSORED BY:

**REVOLU(SUN)**  
cleaner. smarter. living. LIC# ABC 30244

**2024 MILILANI TOWN ASSOCIATION**

# HOMIE @ EXPO

MILILANI REC 5 | 95-1101 AINAMAKUA DR | MILILANI MAUKA  
FREE EVENT | FREE PARKING + FREE SHUTTLE FROM MILILANI PARK & RIDE

**AUGUST 24 • 9AM - 3PM • REC 5**

**VISIT [MILILANTOWN.ORG](http://MILILANTOWN.ORG) FOR MORE INFORMATION**



**CHECK OUT  
VALUABLE  
RESOURCES  
FOR ALL YOUR  
CURRENT  
& FUTURE  
HOME  
IMPROVEMENT  
NEEDS!**

**FREE HOME EXPO FOLDER\***

**FREE MAKE & TAKE WOODEN SIGN\***

**MTA INSTANT WIN GAME\***

**MTA MEMBER EXCLUSIVE GIVEAWAY**

**ENTER TO WIN A**

**\$250 WALMART GIFT CARD**

**\*ONE FOLDER/DIY/GAME PLAY PER FAMILY.  
WHILE SUPPLIES LAST.**

**VENDORS & FEATURES ARE SUBJECT TO CHANGE.**



**GOLD EXHIBITORS**



**SILVER EXHIBITORS**



**BRONZE EXHIBITORS**

MILILANI HANDYMAN | HOMES OF HAWAII REAL ESTATE | 535 PLUMBING LLC  
 ASHLEY GUNDAKER, STATE FARM AGENT | ALPHA OMEGA PLUMBING AND SEPTIC  
 ALMIGHTY ELECTRICAL INC. | SHOJI HAWAII | OAHU DRAIN RESTORATION  
 TROPICAL RAINGUTTER OF HAWAII INC. | URGENT ISLAND RESTORATION  
 HI GRADE MASONRY LLC | ALOHA KANGEN WATER | ANI-KINE CLEANING SERVICES

**COMMUNITY PARTNERS:**

BOARD OF WATER SUPPLY | HAWAIIAN ELECTRIC COMPANY  
 HONOLULU POLICE DEPT. | HONOLULU FIRE DEPT.  
 DEPT. OF REFUSE | DEPT. OF ENVIRONMENTAL SERVICES

FOOD VENDORS & COMFORT TENT: SAMA SAMA | SHAKA MEX



An Upper School Applied Engineering student utilizing critical thinking and problem-solving skills to complete her project in our Makerspace.

*Dream. Learn. Do.*  
**THE HANALANI WAY!**

Students from preschool to Grade 12 thrive while living out our motto of LOVE GOD, LOVE OTHERS, AND CHALLENGE YOURSELF! Through a variety of teaching methods and utilizing our innovative learning areas students can grow mentally, physically, emotionally, and spiritually.

**LEARN MORE AT HANALANI.ORG**

QUESTIONS? Contact our Admissions Office at 808.625.0737 ext. 456 or [admissions@hanalani.org](mailto:admissions@hanalani.org)

*See the Hanalani Way*

HANALANISCHOOLS HANALANIROYALS HANALANISCHOOLS



**REC 7 CAFE**

95-1333 Lehiwa Drive | Mililani Mauka  
Open Sunday - Thursday: 7 am - 7 pm  
Open Friday & Saturday: 7 am - 8 pm



**Hawaii's largest locally owned window company**

**Buy One Get One Free!**

**Mililani Residents Only**



**Windows Made for Hawaii**

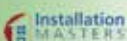
- Highest ratings for keeping out heat, sound and harmful UV light
- Hawaii's Best Lifetime Warranty on the windows/doors AND a Lifetime Warranty on the installation. Broken glass, leaks, All Covered!
- No subcontractors! All our installers are expertly trained by us and employees of the company.



Call Today for a Free No Obligation consultation.  
0% Interest / No Money Down Financing Available.  
(4 window minimum)

**808-374-9116 • [www.DiamondHeadWindows.com](http://www.DiamondHeadWindows.com)**

Showroom hours: Monday - Friday 8am to 5pm and Saturday 9am to 1pm  
99-1093 Iwaena St., Bay G, Aiea, HI Contractors #C35059



11 Years in a Row

# MTA BINGO



Happily Sponsored By:



HMSA | Quillopo Painting

# sept 13

REC 5 4:00 PM - 5:30 PM  
6:30 PM - 8:00 PM

**TICKETS AVAILABLE ON WEBTRAC 9/6 AT 10 AM**

ACTIVE WEBTRAC ACCOUNT REQUIRED PRIOR TO TICKET DATE TO PURCHASE TICKETS.

ONE TIME SLOT PER HOUSEHOLD.

Ticket required to receive BINGO packet. One BINGO packet per player.

[visit mililantown.org](http://visit.mililantown.org) for more information.



& Walmart of Mililani  
Proudly Sponsors:

## mililani town association

*autumn festival*



SHOP!  
A Unique Collective  
of Local Crafters  
& Vendors!

# craft fair

**+street food arena**

**september 21** rec 5 ♡ 4pm - 9pm

free event • free parking • free shuttle from mililani park & ride

Rec 5: 95-1101 Ainamakua Drive • Mililani Mauka • Park & Ride: 95-1069 Ukuwai St. • Mililani Mauka

**visit mililantown.org for more information**

# MEMBER SERVICES | FACILITY INFORMATION

## MTA FACILITY AMENITIES & FEATURES

Rec Center	Business Office	Hall Rental	Pool Rental	Meeting Room Rental	BBQ Pavilion Rental	Swimming Pool	Kiddie Pool	Pool Amenities	Tennis & Pickleball	Basketball Court	Volleyball Court	Picnic Area	Ping Pong	FREE Wi-Fi	Other
1		★	★			★	★	Jet Spa Water Slide						★	
2				★		★	★	Heated Saline		Outdoor		★	★	★	Tot Lot
3	★	★	★			★		Saline	★				★	★	
4						★	★							★	Splash Park, Tot Lot
5		★												★	
6		★	★			Handicap Lift		Jet Spa						★	
7	★				★	Walk-In Ramp	★	Heated Saline Jet Spa	Indoor Pickleball	Indoor Gym	Indoor Gym	Covered Seating	★	★	Rec 7 Cafe, Tot Lot Family Room, Internet Cafe

### FACILITY INFORMATION

For complete facility schedule, holiday hours and closures see page 22 or visit [mililantown.org](http://mililantown.org)

**MTA MAILING ADDRESS: 95-303 KALOAPAU STREET | MILILANI, HI 96789**



**ADMIN OFFICE**

95-303 Kaloapau Street | Mililani Town  
**Located next to Rec 3**  
 Tel: 808-623-7300 | Fax: 808-623-3474  
 Open Weekdays 8:00 am - 4:30 pm  
 Closed Weekends and Holidays



**REC CENTER 4**

94-233 Makapipipi Street | Mililani Town  
 Tel: 808-440-2604



**REC CENTER 1**

95-400 Ikaloa Street | Mililani Town  
 Tel: 808-440-2601



**REC CENTER 5**

95-1101 Ainamakua Drive | Mililani Mauka  
 Tel: 808-440-2605  
 For Rental Information, See Page 24



**REC CENTER 2**

94-300 Anania Drive | Mililani Town  
 Tel: 808-440-2602



**REC CENTER 6**

95-1010 Konaku Street | Mililani Mauka  
 Tel: 808-440-2606



**REC CENTER 3 | BUSINESS OFFICE**

95-281 Kaloapau Street | Mililani Town  
 Tel: 808-440-2603  
 Business Office Open Daily: 7:00 am - 9:00 pm  
**Last office transaction at 8:45 pm**  
 Cash, checks and credit cards accepted



**REC CENTER 7 | BUSINESS OFFICE**

95-1333 Lehiwa Drive | Mililani Mauka  
 Tel: 808-440-2608  
 Business Office Open Daily: 7:00 am - 7:00 pm  
**Last office transaction at 6:45 pm**  
 Cash, checks and credit cards accepted

### MTA MEMBERSHIP CARDS

Only one Member card is needed for your entire household. This will eliminate the need to purchase individual cards for everyone in your household.

No pictures or expiration date will be printed. A picture will still need to be taken for our RecTrac system only. At your convenience, please stop by any Recreation Center or Business Office to take your pictures.

#### MTA MEMBERSHIP ID CARD FEES:

**New Card \$6.50 | 1 Year Renewal \$5 | Additional Cards \$2**  
**Don't forget a picture ID for verification.** You may also take a picture of the barcode on the back of the card with your phone in lieu of purchasing an additional card.

### MTA GUEST PASS

Guests will be required to have a Guest Pass, good for one day, with a fee of **\$12** per pass (each individual needs a pass).

This pass is good for the entire day it is used, at any MTA Rec. Center as long as the guest is accompanied by the member at all times. This does not include MTA programs or classes (Tiny Tots, Aquatics, etc.)

Guest Passes may be purchased at Rec 1, 2, 4, 6 (credit card only), Admin Office or Business Offices at Rec 3 and 7.

### MEMBERSHIP POLICY

To access MTA's Recreation Centers, participate in programs and classes, members must obtain a valid MTA membership card.

The Owner listed on the property must submit an "Owner's Membership Information" form acknowledging that those listed are residing at the homeowner's property address.

The Member Services Department will be reviewing accounts. Proof of residency at the MTA property address may be required. An "Affidavit of Residency" will need to be signed in front of a Notary Public stating that the listed residents are permanently living with the Owner at the property address.

Misrepresentation of facts to obtain membership may result in the rescinding of MTA membership cards and/or suspension of privileges for the member(s) of the respective MTA property.

If there are any changes to your household, please submit an "Owner's Membership Information" form to update your account.

**You may find the form on our website at:**  
[mililantown.org](http://mililantown.org) / **FOR RESIDENTS/FORMS/ Homeowner Management**

## ONLINE CANCELLATIONS - WEBTRAC

Cancellations are now available online for Lap Lanes, Pickleball and Tennis Court reservations!

- You may do your own cancellations online if you cancel more than 3 hours prior to your reservation
- If you would like to cancel under 3 hours prior to your reservation, please call the reservations hotline at 808-440-2633 or 808-440-2608

### INSTRUCTIONS:

- Log into your WebTrac Account
- Click on down arrow next to your name and account number

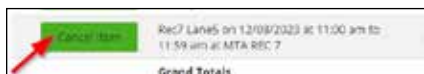


- Under **HISTORY & BALANCES**, click on **CANCELLATIONS**



Click on **CANCEL ITEM**

Click on **PROCEED TO CHECKOUT**



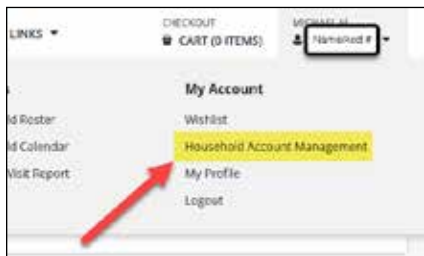
## FAMILY MEMBER LOGINS FOR WEBTRAC\*

Individual logins for household members on WebTrac introduced!

Household Account Management: Allows primary account holder to invite household members to create accounts.

Password Management: WebTrac users solely manage username and passwords.

Enables independent browsing, personalized experience for each user on WebTrac with the same household limits applying.



FOR MTA MEMBERS  
**CONSOLIDATED THEATRES**  
 INCREASED THEIR SCREENSAVER PRICES  
**\$9.50**  
 SCREENSAVER TICKETS  
 Buy your Screensaver movie tickets at the Business Offices at Rec 7 & 7. Present the tickets at the Mililani 14 Theatres box office, or other participating Consolidated Theatre locations, for admission. Not valid for "No Pass" engagements. Screensaver tickets do not expire.  
 Visit [consolidatedtheatres.com](http://consolidatedtheatres.com) for show times & movie information

**PERFORMANCE PLUMBING**  
 PROVIDING QUALITY SERVICES FOR OVER 10 YEARS!  
**SERVICING RESIDENTIAL AND COMMERCIAL PROPERTIES ISLAND-WIDE**  
**PLUMBING TROUBLES?**  
 CONTACT PERFORMANCE PLUMBING TODAY!  
**(808) 852-1575**  
**SPECIALIZING IN:**  
 - Bathroom renovations  
 - Water Filtration Systems  
 - Water heater replacement  
 - Water line Repiping  
 - Sewer camera inspection  
 - Hydro jet cleaning  
 - Water leak detection  
 - Manabloc/Pex repairs  
 - Backflow Installation/Testing  
 SIGNATORY CONTRACTOR LOCAL UNION 675 PLUMBERS AND FITTERS  
 BBB ACCREDITED BUSINESS  
 QR CODE

## WORK at MTA

AVOID TRAFFIC! WORK CLOSER TO HOME OR RIGHT IN YOUR COMMUNITY!  
 WORK IN A FUN AND PROFESSIONAL ENVIRONMENT. GAIN VALUABLE WORK EXPERIENCE.  
 ALL MTA EMPLOYEES ARE GRANTED COMPLIMENTARY EMPLOYEE MTA CARDS WITH ACCESS TO ALL 7 REC CENTERS.  
 EMPLOYEES RECEIVE SERVICE AWARDS, HAVE ACCESS TO EMPLOYEE ASSISTANCE PROGRAM  
 AND ENJOY EMPLOYEE PARTIES + OTHER BENEFITS.

### FULL & PART TIME

- BUILDING MAINTENANCE PERSON (Full Time Union)**
- GROUNDS MAINTENANCE PERSON (Full Time Union)**
- BARISTA (Part Time)**
- LIFEGUARD (Part Time)**
- SWIM INSTRUCTOR (Part Time)**
- MEMBER SERVICES COORDINATOR (Part Time)**

See page 30 for more information OR  
 See a current list of job openings and submit an application at:

**MILILANTOWN.ORG/EMPLOYMENT**

MILILANI TOWN ASSOCIATION STAFF

# AUGUST 2024 FACILITY SCHEDULE

Notifications/Changes indicated with RED text  
\*Facility schedule & closures are subject to change

**FACILITY CLOSURES** | For holiday hours, current facility availability & hours of operation, please visit: [mililantown.org](http://mililantown.org)

AUGUST 7 | Wednesday | Event: Wednesday BINGO | **Rec 5 CLOSED until 2:00 pm**  
 AUGUST 8 | Thursday | **Rec 2 Meeting Room, Tot Lot & Courts CLOSED until 11:30 am**  
 AUGUST 12 - 23 | **Rec 1 Pool CLOSED FOR MAINTENANCE**  
 AUGUST 15 | Thursday | **All Facilities & Business Offices will be CLOSED at 5:00 pm**  
 AUGUST 16 | Friday | Holiday: Admissions Day | **Admin Office CLOSED**  
 AUGUST 22 | Thursday | **Rec 7 CLOSED until 2:00 pm**  
 AUGUST 24 | Saturday | Event: Home Expo | **Rec 5 CLOSED**

**NOTICE REGARDING JET SPAS:  
JET SPAS ARE CLOSED DURING ALL AQUATICS PROGRAMS**

FACILITY	SUNDAY	MONDAY	TUESDAY	WEDNESDAY	THURSDAY	FRIDAY	SATURDAY
<b>REC 1 95-400 Ikaloa Street   Mililani Town   808-440-2601</b> REC 1 POOL <b>CLOSED</b> FOR MAINTENANCE ON 8/12/24 - 8/23/24 & ON MONDAYS UNTIL 12 PM							
Swimming Pool	Lap   Open 7 am - 12 pm	Open Swim 12 pm - 7 pm	Lap   Open 7 am - 12 pm	Lap   Open 7 am - 12 pm	Lap   Open 7 am - 12 pm	Lap   Open 7 am - 12 pm	Lap   Open 7 am - 12 pm
	Open Swim* 12 pm - 7 pm		Open Swim 12 pm - 7 pm	Open Swim 12 pm - 7 pm	Open Swim 12 pm - 7 pm	Open Swim 12 pm - 7 pm	Open Swim* 12 pm - 7 pm
Jet Spa	7 am - 7 pm	2 pm - 7 pm	7 am - 7 pm	7 am - 7 pm	7 am - 7 pm	2 pm - 7 pm	7 am - 7 pm
Water Slide	CLOSED	CLOSED	CLOSED	CLOSED	CLOSED	CLOSED	CLOSED
*SATURDAY OPEN SWIM 12 PM - 3 PM & SUNDAY OPEN SWIM 12 PM - 4 PM WHEN THERE IS A SCHEDULED HALL RENTAL - **WATER SLIDE AVAILABILITY IS SUBJECT TO CHANGE & CLOSURE							
<b>REC 2 94-300 Anania Drive   Mililani Town   808-440-2602</b> REC 2 POOL <b>CLOSED</b> FOR MAINTENANCE ON TUESDAYS UNTIL 12 PM							
Swimming Pool* Heated Saline	Lap Swim 7 am - 12 pm	Lap Swim 7 am - 12 pm	Lap   Open 12 pm - 2:45 pm	Lap Swim 7 am - 12 pm	Lap Swim 7 am - 12 pm	Lap Swim 7 am - 12 pm	Lap Swim 7 am - 12 pm
	Lap   Open 12 pm - 7 pm	Lap   Open 12 pm - 7 pm	Swim Lessons 3 pm - 7 pm	Lap   Open 12 pm - 6 pm	Lap   Open 12 pm - 2:45 pm	Lap   Open 12 pm - 9 pm	Lap   Open 12 pm - 9 pm
Court & Tot Lot	Free Play 7 am - 7 pm	Free Play 7 am - 7 pm	Free Play 12 pm - 7 pm	Free Play 7 am - 7 pm	Free Play 7 am - 7 pm	Free Play 7 am - 7 pm	Free Play 7 am - 7 pm
<b>REC 3 95-281 Kaloapau Street   Mililani Town   808-440-2603</b> REC 3 POOL <b>CLOSED</b> FOR MAINTENANCE ON TUESDAYS UNTIL 12 PM							
Business Office	Rec 3 Business Office Open Daily: 7 am - 9 pm   Last Transaction at 8:45 pm						
Swimming Pool Saline	<b>CLOSED</b>	Adult Learn to Swim 8 am - 9 am	<b>CLOSED</b>	Adult Learn to Swim 8 am - 9 am	Water Aerobics 9 am - 10 am	Water Aerobics 9 am - 10 am	<b>CLOSED</b>
		Water Aerobics 9 am - 10 am		Water Aerobics 9 am - 10 am	<b>CLOSED</b>		
		Parent Aid 1:30 pm - 2:30 pm		Parent Aid 1:30 pm - 2:30 pm			
		SN/LTS Water Therapy 2:30 pm - 6 pm		SN/LTS Water Therapy 2:30 pm - 6 pm			
Tennis & Pickleball Courts*	7 am - 9 pm	7 am - 9 pm	7 am - 9 pm	7 am - 9 pm*	7 am - 9 pm**	7 am - 9 pm	7 am - 9 pm
*PICKLEBALL COURTS 1 & 3   <b>CLOSED</b> FOR LESSONS: WEDNESDAYS FROM 7:00 PM - 9:00 PM - **TENNIS COURT 1   <b>CLOSED</b> FROM 10 AM - 2 PM ON THE LAST THURSDAY OF THE MONTH							
<b>REC 4 94-233 Makapipipi Street   Mililani Town   808-440-2604</b> REC 4 POOL <b>CLOSED</b> FOR MAINTENANCE ON FRIDAYS UNTIL 12 PM							
Swimming Pool	Open Swim 10 am - 5 pm	Open Swim 7 am - 7 pm	Open Swim 12 pm - 7 pm	Open Swim 12 pm - 7 pm	Open Swim 12 pm - 7 pm	Open Swim 12 pm - 7 pm	Open Swim 10 am - 5 pm
Splash Park & Tot Lot	10 am - 5 pm	7 am - 7 pm		12 pm - 7 pm		12 pm - 7 pm	10 am - 5 pm
<b>REC 6 95-1010 Konaku Street   Mililani Mauka   808-440-2606</b> REC 6 POOL <b>CLOSED</b> FOR MAINTENANCE ON WEDNESDAYS UNTIL 12 PM							
Swimming Pool Subject to closure during Hall Rentals	Lap Swim 7 am - 7 pm	Lap Swim 7 am - 3 pm	Lap Swim 7 am - 3 pm	Lap Swim 12 pm - 3 pm	Lap Swim 7 am - 3 pm	Lap Swim 7 am - 7 pm	Lap Swim 7 am - 7 pm
		Junior Masters 3 pm - 4:30 pm 4:30 pm - 6 pm	Aloha Aquatics 3 pm - 5 pm	Junior Masters 3 pm - 4:30 pm 4:30 pm - 6 pm	Aloha Aquatics 3 pm - 5 pm		
		Lap Swim 6 pm - 7 pm	Lap Swim 5 pm - 7 pm	Lap Swim 6 pm - 7 pm	Lap Swim 5 pm - 7 pm		
Jet Spa	7 am - 7 pm	7 am - 7 pm	7 am - 7 pm	12 pm - 7 pm	7 am - 7 pm	7 am - 7 pm	7 am - 7 pm
<b>REC 7 95-1333 Lehiwa Drive   Mililani Mauka   808-440-2607</b> REC 7 POOL <b>CLOSED</b> FOR MAINTENANCE ON THURSDAYS UNTIL 12 PM							
Business Office	Open Daily: 7 am - 7 pm   Last Transaction at 6:45 pm						
Swimming Pool Heated Saline Handicap Accessible Walk-In Ramp	Swim Lessons 8 am - 11 am	Lap Swim 7 am - 9:45 am	Lap Swim 7 am - 9:45 am	Lap Swim 7 am - 9:45 am	Lap   Open 12 pm - 6 pm	Lap Swim 7 am - 9:45 am	Swim Lessons 8 am - 11 am
	Open Swim 11 am - 7 pm	Water Aerobics 10 am - 11 am	Water Aerobics 10 am - 11 am	Water Aerobics 10 am - 11 am		Water Aerobics 10 am - 11 am	Water Aerobics 10 am - 11 am
		Lap   Open 11 am - 7 pm	Lap   Open 11 am - 6 pm	Lap   Open 11 am - 7 pm		Lap   Open 11 am - 9 pm	Open Swim 11 am - 9 pm
Jet Spa	11 am - 7 pm	12 pm - 7 pm	7 am - 7 pm	7 am - 7 pm	12 pm - 7 pm	7 am - 9 pm	11 am - 9 pm
Gym	Pickleball		Group Play 7 am - 1 pm		Group Play 7 am - 1 pm	Group Play 7 am - 1 pm	
	Basketball	Group Play 7 am - 11 am	Free Play 7 am - 11 am	Free Play 7 am - 7 pm	Free Play 1 pm - 5 pm	Free Play 1 pm - 9 pm	Group Play 7 am - 10 am**
		Free Play 11 am - 7 pm					Free Play 10 am - 1 pm**
Volleyball	Free Play 12 pm - 7 pm	Free Play 12 pm - 7 pm	Clinic 5 pm - 7 pm	Clinic 5 pm - 7 pm	Free Play 1 pm - 8 pm**		
Other	Café: Sunday - Thursday: 7 am - 7 pm   Friday & Saturday 7 am - 8 pm - Outdoor Seating, Family Room, Ping Pong, Tot Lot : Sunday - Thursday: 7 am - 7 pm   Friday & Saturday 7 am - 9 pm						
**HOLIDAY GYM SCHEDULE (SATURDAYS)   BASKETBALL GROUP PLAY 7 AM - 11 AM - BASKETBALL FREE PLAY 11 AM - 8 PM							

**LAP SWIM • TENNIS/PICKLEBALL COURT  
ONLINE RESERVATIONS**



Reservations may be obtained at the MTA **WebTrac** website via **mililantown.org** (See page 12 for more information about WebTrac.)

**RESERVATIONS ARE LIMITED**

Reservations open at 6:00 am each day  
Reservations can be made up to 3 days in advance  
Reservation system is down between 11:00 pm – 6:00 am

**POOL LANES (LAP SWIM)  
REC 2, 6 & 7**

**LIMIT:** Two (2) lap swim reservations per household, per day



**PICKLEBALL COURTS**

<table border="1"> <tr><td>PKB</td><td>PKB</td><td>PKB</td><td>PKB</td></tr> <tr><td>PKB</td><td>PKB</td><td>PKB</td><td>PKB</td></tr> <tr><td>PKB</td><td>PKB</td><td>PKB</td><td>PKB</td></tr> <tr><td>PKB</td><td>PKB</td><td>PKB</td><td>PKB</td></tr> </table>	PKB	PKB	PKB	PKB	PKB	PKB	PKB	PKB	PKB	PKB	PKB	PKB	PKB	PKB	PKB	PKB	<table border="1"> <tr><td>RESERVED</td><td>Court 3:</td><td>Court 1:</td></tr> <tr><td>Sat &amp; Sun ONLY</td><td>Sat &amp; Sun</td><td>Mon - Fri Sat &amp; Sun</td></tr> </table>	RESERVED	Court 3:	Court 1:	Sat & Sun ONLY	Sat & Sun	Mon - Fri Sat & Sun	<table border="1"> <tr><td>TENNIS COURT 2</td><td>TENNIS COURT 1</td></tr> <tr><td> </td><td> </td></tr> <tr><td> </td><td> </td></tr> <tr><td> </td><td> </td></tr> </table>	TENNIS COURT 2	TENNIS COURT 1						
PKB	PKB	PKB	PKB																													
PKB	PKB	PKB	PKB																													
PKB	PKB	PKB	PKB																													
PKB	PKB	PKB	PKB																													
RESERVED	Court 3:	Court 1:																														
Sat & Sun ONLY	Sat & Sun	Mon - Fri Sat & Sun																														
TENNIS COURT 2	TENNIS COURT 1																															

**LIMIT: ONE (1) COURT RESERVATION PER HOUSEHOLD, PER DAY**

**TENNIS COURT 2:**

Open for singles/doubles  
**LIMIT:** One (1) court reservation per household, per day

For any cancellations, questions, or concerns regarding online reservations, please call the reservations hotline at:  
**808-440-2633 or 808-440-2608**

\*Reservation availability, duration & times are subject to change.

**YOUR NEIGHBORHOOD SPECIALTY SHOE STORE**  
We carry wide width shoes & a variety of arch supports for all needs

Try Before you Buy, Feel the Difference

Conveniently Located in Waipio & Aiea  
**(808) 488-6588**  
runnershi88@gmail.com  
Waipio: 94-1235 Ka Uka Blvd | Aiea: 98-390 Kam Hwy  
Mon - Fri: 10-6 | Sat - Sun: 10-5

**RUNNER'S HI**  
OAHU • HAWAII  
RUNNERSHI.NET

**ARE YOU PROTECTED?**

Electricity Bill      Severe Weather      Power Outage

visit us!  
808.748.8888  
revolusun.com

**REVOLU(SUN)**  
cleaner. smarter. living.      (C) 2024

Need Event Tickets?  
Want to Rent a Hall?  
Interested in Swim Lessons?  
Tiny Tots? Lap Swim?

See page 12 for more information!

**SIGN UP FOR** [mililantown.org](http://mililantown.org)

**WEBTRAC TODAY!**

### HALL RESERVATIONS

Rec	Address	Max Capacity	Hall Rental	Pool (Optional)*	Lifeguard Fee*	Tables	Chairs
1	95-400 Ikaloa Street   Mililani Town	130	\$500	\$100 Waterslide NOT Rentable	\$80 per every 35 people in pool area	29	146
	SATURDAY: 3:00 pm – 10:30 pm (Party 5:00 pm – 10:00 pm)   SUNDAY: 4:00 pm – 10:30 pm (Party 5:00 pm – 10:00 pm) Pool Available with Hall Rental ONLY   SUNDAY Pool Rental for evening parties is from 5:00 pm – 9:00 pm						
  							
3	95-281 Kaloapau Street   Mililani Town	230	\$600	\$100	\$80 per every 35 people in pool area	42	247
	FRIDAY: 3:00 pm – 10:30 pm (Party 5:00 pm – 10:00 pm)   SATURDAY: 3:00 pm – 10:30 pm (Party 5:00 pm – 10:00 pm) SUNDAY: 8:00 am – 2:30 pm (Party 10:00 am – 2:00 pm) OR 4:00 pm – 10:30 pm (Party 5:00 pm – 10:00 pm) Pool Available with Hall Rental ONLY FRIDAY, SATURDAY & SUNDAY Pool Rental for evening parties is from 5:00 pm – 9:00 pm SUNDAY Pool Rental for day parties is from 10:00 am – 2:00 pm						
5	95-1101 Ainamakua Drive   Mililani Mauka	350	\$800	N/A	N/A	72	355
	FRIDAY: 3:00 pm – 10:30 pm (Party 5:00 pm – 10:00 pm)   SATURDAY: 3:00 pm – 10:30 pm (Party 5:00 pm – 10:00 pm) SUNDAY: 8:00 am – 2:30 pm (Party 10:00 am – 2:00 pm) OR 4:00 pm – 10:30 pm (Party 5:00 pm – 10:00 pm)						
  							
6	95-1010 Konaku Street   Mililani Mauka	200	\$600	\$100	\$80 per every 35 people in pool area	40	210
	FRIDAY: 3:00 pm – 10:30 pm (Party 5:00 pm – 10:00 pm)   SATURDAY: 3:00 pm – 10:30 pm (Party 5:00 pm – 10:00 pm) SUNDAY: 8:00 am – 2:30 pm (Party 10:00 am – 2:00 pm) OR 4:00 pm – 10:30 pm (Party 5:00 pm – 10:00 pm) Pool Available with Hall Rental ONLY FRIDAY, SATURDAY & SUNDAY Pool Rental for evening parties is from 5:00 pm – 9:00 pm SUNDAY Pool Rental for day parties is from 10:00 am – 2:00 pm						

### REC 7 BBQ PAVILION RENTAL

#### Rec 7 Pavilion Rental Fee: \$75 per Pavilion

Reservations open a year-to-date in advance and are taken on a first come, first served basis.

The maximum capacity of each pavilion is twelve people. Same day back-to-back advance reservations are not allowed.

Alcohol, tents, extra tables, amplified music, machines, bouncers, and vendors are prohibited. All pavilion users must exit the recreation center at the end of the reservation.

**No refunds are given for cancellations.**

#### REC 7 PAVILION RENTAL HOURS

##### SUNDAY - THURSDAY\*

Day Rentals: 10:00 am - 2:00 pm

\*Day Rental not available on Thursdays

Evening Rentals: 3:00 pm - 7:00 pm

##### FRIDAY & SATURDAY

Day Rentals: 10:00 am - 2:00 pm

Evening Rentals: 4:00 pm - 8:00 pm



### REC 2 MEETING ROOM RENTAL

#### Rec 2 Meeting Room: \$20/hour

Tables and chairs are provided. Renter must be an adult and an MTA homeowner listed on the property deed or an MTA tenant listed as "Head of Household" in MTA's database. Call the Admin Office (808-623-7300) for information and availability.

### REGARDING POOL RESERVATIONS & LIFEGUARDS:

All reservations for the use of a swimming pool will require payment for the services of MTA lifeguards. One lifeguard is required for every 35 people in the pool area regardless if they are swimming or not. Lifeguards must remain on duty as long as there are people in the pool area. There is no "grace-period" for setting-up or clean-up for swimming pool rentals. Flotation tubes and pool toys are provided by MTA at Recs 3. The Rec 1 Waterslide will not be available during pool rentals.



MILILANI TOWN ASSOCIATION  
**TINY TOTS**  
 Tues & Thurs | 8:30 am - 10:30 am at Rec 5  
**WEBTRAC**



Open to Children 18 months to 4 years old



With the help of an adult, children will enjoy play time, circle time, arts & crafts, pool & park days, field trips and meeting new friends! This program offers a safe, fun and educational stepping stone to preschool.

**ONLINE REGISTRATION IS ONGOING**  
 \$70 per month for MTA Members  
 Call 808-623-7300  
 to ask about observing a class before signing up.

**TO REGISTER OR FOR MORE INFO, VISIT:**  
[MILILANITOWN.ORG/ACTIVITIES/FOR-TOTS/](http://MILILANITOWN.ORG/ACTIVITIES/FOR-TOTS/)



**SAKURA**  
 Japanese Restaurant



MONDAY - THURSDAY:  
 11:00 am - 2:30 pm | 4:30 pm - 10:00 pm  
 FRIDAY & SATURDAY  
 11:00 am - 2:30 pm | 4:30 pm - 10:00 pm  
 SUNDAY  
 Noon - 3:00 pm | 4:00 pm - 9:30 pm

Show military ID to receive  
**10% OFF** with purchase of \$30 or more.  
 Valid Sunday - Thursday Only.  
 Dine In Only. Expires 8/31/2024  
 Gift certificates not included.  
 Cannot be used in combination with other promotions.

**808-625-6688 | 808-625-8881**

**sakurahawaii.com**

94-780 Meheula Pkwy. | Mililani, Hawaii | Mililani Marketplace

Scan for Online Order



MILILANI TOWN ASSOCIATION  
**SENIORS PROGRAM**

Wednesdays | 9:30 am - 11:30 am  
 Rec 5 | 95-1101 Ainamakua Dr.



Mililani residents, 55 and over, with a valid MTA ID card are welcome to participate.

Activities Include: Game days, cultural activities, informational seminars, holiday celebrations, potlucks, pool and park days, service projects, arts & crafts and more!

WHAT'S ON NEXT MONTH'S CALENDAR?  
 Visit: [mililantown.org/activities/for-seniors/](http://mililantown.org/activities/for-seniors/)  
 THIS IS A FREE PROGRAM FOR MTA MEMBERS

**WEBTRAC REGISTRATION REQUIRED**

For Registration Assistance,  
 contact Jess at 808-440-2640

**FINANCIAL ADVISORS IN MILILANI**  
 Serving our community since 1992  
**Chinen & Arinaga**  
 FINANCIAL GROUP, INC.

**UPCOMING WORKSHOPS**

- Aug 10 - Hawaii's State Retirement System  
 For DOE & University Employees
- Sept 7 - Life Insurance  
 Unlock financial security with guest speaker from Symetra
- Sept 19 - A Healthier Year  
 Dr. Theresa Wee shares tips on health

**RSVP & Bring a friend!**



Scan & RSVP



95-119 Kamehameha Hwy | Mililani, HI, 96789  
[activities@ca-fg.com](mailto:activities@ca-fg.com) | (808) 582-7848 | [ca-fg.com](http://ca-fg.com)

# AQUATICS PROGRAMS

## ADULT WATER AEROBICS

WEBTRAC

Participants of all fitness levels will enjoy water workouts to improve strength, balance, endurance and flexibility. Classes are led by a fitness instructor and are conducted to music, both in waist-to-chest deep water and in deep water. Must be at least 18 years old to participate.

**Classes are not held on holidays.**

### MONDAY, WEDNESDAY, THURSDAY & FRIDAY

**NO CLASS 8/16/24**

Time: 9:00 am - 10:00 am

Place: REC 3

### MONDAY, TUESDAY, WEDNESDAY & FRIDAY

**NO CLASS 8/16/24**

Time: 10:00 am - 11:00 am

Place: REC 7

### TUESDAY & THURSDAY

**NO CLASS 8/15/24**

Time: 6:00 pm - 7:00 pm

Place: REC 7

### WEDNESDAY

Time: 6:00 pm - 7:00 pm

Place: REC 2

### PUNCH CARD FEES (WITH MTA CARD)

1 Class: \$4    14 Classes: \$42

2 Classes: \$7    25 Classes: \$70

9 Classes: \$30



## ADULT LEARN TO SWIM

WEBTRAC

Must be 18 years old or older. Classes are 45 minutes long. Participants are taught to be safe and comfortable in the water using basic water skills and fundamental strokes. Participants of all levels are welcome.

### MONDAY & WEDNESDAY (7 classes)

Dates: 8/5/24 - 8/26/24

Time: 8:00 am - 8:45 am

Place: REC 3

Fee: \$90 for MTA Members

## PARENT AID

WEBTRAC

Classes are for infants and toddlers (8 months - 3 years old) accompanied by an adult. Parents are taught how to build their child's confidence and skill levels. Participants will work on water entry and exit and water exploration. Parents will work with participant on water skills such as bobbing with blowing bubbles, floating on their front and backs, and introduce beginner skills such as kicking and sculling.

Classes are 30 minutes one-on-one parent and child with an instructor teaching in a group setting. There will be 25 minutes of water exploration, shared individual time with the instructor, and free play immediately after.

### MONDAY & WEDNESDAY (7 classes)

Dates: 8/5/24 - 8/26/24

Time: 1:30 pm - 2:25 pm

Place: REC 3

Fee: \$110 for MTA members

# KIDS LEARN TO SWIM

## MTA MEMBER REGISTRATION

WEBTRAC

FOR OCTOBER 2024 - NOVEMBER 2024 SESSION

Preschool through Level 6:

**FRIDAY, SEPTEMBER 27, 2024**

Starting at 10:00 am ONLINE on WEBTRAC



## CURRENT AUGUST - SEPTEMBER SESSION SCHEDULE | 8/6/24 - 9/22/24

### TUESDAY & THURSDAY (14 classes)

Dates: 8/6/24 - 9/24/24

**NO CLASS 8/15/24**

Time: 3:00 pm, 4:00 pm, or 5:00 pm

Place: REC 2 (heated pool)

Fee: \$210 for MTA Members

### SATURDAY & SUNDAY (14 classes)

Dates: 8/10/24 - 9/22/24

Time: 8:00 am, 9:00 am, or 10:00 am

Place: REC 7 (heated pool)

Fee: \$210 for MTA Members

### SATURDAY ONLY (7 classes)

Dates: 8/10/24 - 9/21/24

Time: 8:00 am, 9:00 am, or 10:00 am

Place: REC 7 (heated pool)

Fee: \$105 for MTA Members

### SUNDAY ONLY (7 classes)

Dates: 8/11/24 - 9/22/24

Time: 8:00 am, 9:00 am, or 10:00 am

Place: REC 7 (heated pool)

Fee: \$105 for MTA Members

**Registration:** Due to the popularity of the Kids Learn-to-Swim classes, a registration date is set for each 2-month session. Payment is due upon registration.

**Kids' Learn to Swim Class Rules:** Parents may observe classes from the deck seating areas only. No one is allowed in the swimming or wading pools except the class participants and instructors. We discourage parents from interfering with classes by talking to their child, yelling words of encouragement, reprimanding or making gestures. Parents, who have children 11 years old and under need to be present for the entire swim class. Parents are responsible for escorting participants to and from the lesson area.

**ATTENTION:** If your child is not registered for the appropriate level and the correct level he/she belongs in is full, your money will be refunded, you will be taken off the roster and you will be put on the wait-list.  
**\*SWIM LEVELS MAY BE COMBINED AT ANY TIME.**

## ONE ON ONE LEARN TO SWIM

WEBTRAC

Registration for September session will be open Wednesday, August 7, 2024 online through WebTrac at 8:00 am.

Classes will be 1:1 with an instructor for 25 minutes. All participants welcome from basic water adjustment through stroke refinement skills. Instructors will teach to each participant's abilities. Registration is ongoing month to month. Spots will not be held for prior month's participants. Registration will open the first Wednesday every month for the following month. Participants must be at least 2 ½ years of age.

### TUESDAY & THURSDAY (7 classes)

Dates: 8/1/24 - 8/27/24

**NO CLASS 8/15/24**

Time: 6:00 pm (Limit 6)

6:30 pm (Limit 6)

Place: REC 2

Fee: \$200 for MTA Members

## JUNIOR MASTERS

WEBTRAC

Participants, ages 8-17 years old, work on stroke refinement and endurance necessary to become proficient swimmers. This program is a non-competitive alternative to swim teams.

**Prerequisite:** Participants must have passed Level 6 and must present their MTA report card during registration. If the interested participant did not attend MTA's swim programs, please contact the Aquatics Manager to set up a swim test. Interested participants must be able to perform the back and front crawl stroke, breaststroke, butterfly, and open and flip turns.

### MONDAY & WEDNESDAY

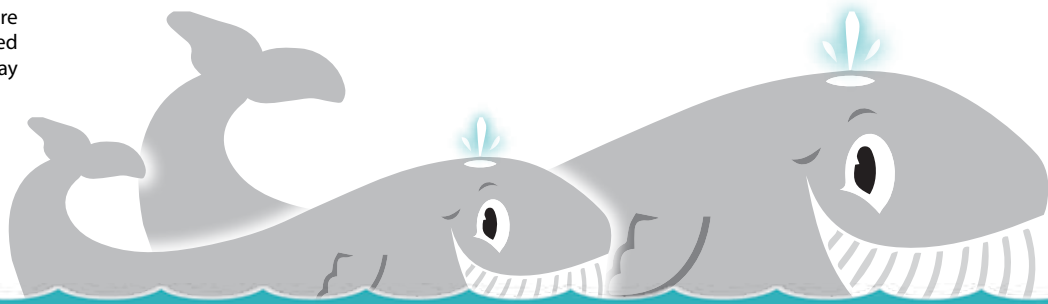
Dates: 8/5/24 - 8/28/24

Time: Novice: 3:00 pm - 4:30 pm

Novice/Adv.: 4:30 pm - 6:00 pm

Place: REC 6

Fee: \$100 for MTA Members



Note: Class size & availability is subject to change

## JOIN WEBTRAC NOW TO ENJOY MTA AQUATICS PROGRAMS ALL YEAR LONG



All Aquatics classes are available online by using WebTrac. See page 12

Please check the following ahead of registration:

1. You need a **username** and **password** for WebTrac. If you don't have one, fill out a **WebTrac Online Access** form (available in WebTrac Quick Links)
2. Verify that your MTA ID cards are valid until the last class date.
3. Verify that the participant is listed in the household.
4. Owners can renew in WebTrac under "My Account" > Membership Renewal.
5. Tenants can only renew at any MTA Business office with a new *Transfer of Privilege* form filled out.

### SPECIAL NEEDS LTS/WATER THERAPY

WEBTRAC

Classes will be 1-on-1 with an instructor for 30 minutes. Participants would need to have special needs or be diagnosed on the autism spectrum. Registration is ongoing month to month.

Registration opens the 2nd Monday of every month for returning participants. Returning participants time slots will be held until the following Monday. Registration will open on the 3rd Monday for all new participants, and all unpaid spots will become available.

#### MONDAY & WEDNESDAY (7 classes)

Dates: 8/5/24 - 8/26/24

Time: 2:30 pm, 3:00 pm, 3:30 pm, 4:00 pm,  
4:30 pm, 5:00 pm, 5:30 pm

Place: REC 3

Fee: \$140 for MTA Members

### WAIT LISTED CLASSES

#### LIFEGUARD CERTIFICATION CLASS

Must be 15 years old or older.

This is an American Red Cross certification course in Lifeguard Training, First Aid, and CPR/AED for the Professional Rescuer.

Fee: \$225 for MTA Members  
\$250 for non-members

#### CPR FOR SCHOOLS & THE COMMUNITY

Must be 15 years old or older.

This is an American Red Cross certification course. Participants in this course learn to recognize and respond to emergencies.

Fee: \$60

**NOTICE REGARDING JET SPAS:**  
Jet Spas are **CLOSED** during Aquatics Programs.  
Thank you for your understanding.

FOR MORE INFO REGARDING  
MTA AQUATICS PROGRAMS, VISIT:  
[MILILANITOWN.ORG/NEWS](http://MILILANITOWN.ORG/NEWS)



#BC-25777  
**AULI CONSTRUCTION**  
INCORPORATED

**BUILDING ISLAND HOMES WITH  
OUTSTANDING QUALITY  
AND EXCEPTIONAL SERVICE!**  
Contact Us for a **FREE Estimate**




**COMPLETE RENOVATIONS  
KITCHEN & BATH REMODELING  
HOME ADDITIONS • HOME REPAIRS  
PREMIER PACKAGE HOME BUILDER • SPECIALIZING IN ADU**

**SHOW US YOUR PLANS OR WE'LL HELP  
WITH DESIGN/BUILD CONSTRUCTION!**




**808-235-6212**  
ESTIMATING@AULIICONSTRUCTION.COM

*"At C & B Quality Painting, we are here to provide you with the best possible services to complete your project on time and on budget. We are committed to being Mililani's premiere painting company and have been servicing the great town of Mililani for over 20 years!"*




**Quality  
Painting**  
Clint Souza, Owner  
Contractor's Lic. # C-26872

**808-625-9411**  
95-883 Makeauepa Pl. • Mililani, Hawaii

**SAVE \$700**  
On Any Complete Interior or Exterior Paint Job  
Not to be combined with any other special offer.

Residential & Commercial Painting  
Interior & Exterior Painting  
Carpentry & Drywall Repairs  
Concrete Restoration

Licensed | Insured | Bonded

**cbppainting.com**




## CLUBS & ORGANIZATIONS

### ALOHA AQUATICS

Our organization is a Mililani Competitive Swim Team since 1971. Swimmers 6-18 years of age are eligible to try out for the team with having the knowledge of ALL the swim strokes.

#### Practices:

Mon - Fri | 5:15 pm - 7:00 pm | VMAC Pool  
Tues, Thurs, Fri | 5:15 pm - 6:45 pm | Wahiawa Pool  
Tues/Thurs | 3:15 pm - 5:00 pm | Rec 6 Pool  
Wednes/Fri | 3 pm - 5 pm | Waiialua Pool

Visit [alohaquatics.org](http://alohaquatics.org) for more information

### BOY SCOUTS OF AMERICA

A program that builds character, trains in the responsibilities of citizenship, and develops personal fitness.

**TROOP #164** | Thursdays | 6:45 pm - 8:45 pm | Rec 3  
**Contact:** Kalani Lee | [klee6267@yahoo.com](mailto:klee6267@yahoo.com)

#### TROOP #664 for Boys

Fridays | 7:00 pm - 8:45 pm | Mililani Waena Elementary  
**Contact:** Dean Uyeno

[ScoutmasterBoys@troop664.org](mailto:ScoutmasterBoys@troop664.org)

#### TROOP #664 for Girls

Fridays | 7:00 pm - 8:45 pm | Mililani Waena Elementary  
**Contact:** Anson Chan | [ScoutmasterGirls@troop664.org](mailto:ScoutmasterGirls@troop664.org)

### CUB SCOUTING

Pack 564 for Girls and Boys Grades K-5  
3rd Friday of the month Aug-May 7:00-8:30  
Mililani Mauka Elementary Cafeteria

**Contact:** [info@mililanicubscouts.com](mailto:info@mililanicubscouts.com)

### GIRL SCOUTS RAINBOW SERVICE UNIT

Girl Scouting builds girls of courage, confidence, and character, who make the world a better place.

**Contact:** Jennifer Frisbee | 808-429-6201  
[rainbow.serviceunit612@gmail.com](mailto:rainbow.serviceunit612@gmail.com)

### MILILANI GARDEN CLUB

Created to promote and participate in community projects where possible, by providing education in horticulture, conservation, garden design, and the art of flower arrangement.

**Meetings:** 3rd Thursday of the month  
9:00 am - noon | Rec 2

**Contact:** 808-623-6287

### MILILANI LIONS CLUB

We help where help is needed in our own communities and around the world, with unmatched integrity and energy.

**Meetings:** 1st, 2nd & 4th Wednesday of the month  
**Contact:** Winston Watarai | [watagai98@gmail.com](mailto:watagai98@gmail.com)

### ROTARY CLUB OF MILILANI SUNRISE

We are a community service organization whose motto is **SERVICE ABOVE SELF**. We work in the community, schools and with other services.

**In-person meeting:** 1st Wednesday | 7:30 am at Rec 2  
**Zoom meetings:** 2nd & 4th Wednesdays | 7:30 am

**Contact:** Kathy Lum, President  
[kathylum.rotary@gmail.com](mailto:kathylum.rotary@gmail.com)

### VENTURE CREW BOY SCOUTS OF AMERICA

A youth development program of the Boy Scouts of America for young men and women.

**Meetings:** 2nd & 4th Tuesday of each month  
6:30 pm - 9:00 pm | Rec 3 (Starts at 7:00 pm)

**Contact:** Stuart Lai | 808-369-7673  
[mililaniventurecrew@gmail.com](mailto:mililaniventurecrew@gmail.com)  
[scouting.org/venturing](http://scouting.org/venturing)

28 | [mililanitown.org](http://mililanitown.org)

## CONTRACTOR CLASSES

### ALOHA FIT



**BOOTCAMP** - This is not your average Bootcamp class! Shake up your fitness routine with a heart-pumping session of fun, games, sweat and strength. Led by a Certified Personal Trainer our signature format is adjustable for all fitness levels and ages. Students are required to bring their own mats and weights. Space is limited, please reserve your spot online today!

Monday: 6:00 pm | Rec 3  
Wednesday: 6:00 pm | Rec 6

**Instructor:** Moria Nisbet  
**Email:** [moria@alohafitmililani.com](mailto:moria@alohafitmililani.com)  
[www.alohafitmililani.com](http://www.alohafitmililani.com)

Cost per class: \$10 MTA Members | \$12 non-members

### KARATE | RICHARD NELSON



A traditional program that promotes self-discipline, respect for others, self-control, self-confidence, focus, and physical fitness. Open to all ages.

Monday & Wednesday: 5:00 pm - 7:00 pm | Rec 1

**Instructor:** Richard Nelson  
**Phone:** 808-721-0507  
[www.fskah.com](http://www.fskah.com)

### JUDO | RICHARD OSHIRO



Are you interested in participating in an Olympic sport that is good for the mind, body and spirit? Mililani Judo Academy has been helping the Mililani community develop confident, respectful citizens since 1973. You will learn self defense, get a great workout, and have fun participating in a lifelong activity that the whole family can enjoy. Come join us!

Tuesday & Thursday: 5:00 pm - 7:00 pm | Rec 1

**Sensei:** Richard Oshiro  
**Phone:** 808-265-2590

### QIGONG & TAI CHI | STUART HOLLOWAY



This class is designed for both beginning and experienced students, and includes a variety of practices and forms for balance, flexibility, focus, strength, relaxation and enhanced breathing techniques.

Students will learn Qigong Warmup, 8 Silk Brocades, Organ Cleansing/Detox, Yang style Tai Chi short forms, and Tai Chi stick in an active, fun and educational environment. Adults (and children under 18 accompanied by a parent or guardian) are welcome.

Tuesday: 5:45 pm - 6:45 pm | Rec 6  
Saturday: 9:45 am - 10:45 am | Rec 6

**Instructor:** Stuart Holloway  
**Phone:** 808-741-3650  
**Email:** [Stuart@InnerycentreLLC.com](mailto:Stuart@InnerycentreLLC.com)  
[www.InnerycentreLLC.com](http://www.InnerycentreLLC.com)

### DANCE CLUB FITNESS



A fun, easy to follow high-energy exercise class with dance moves performed to the hottest hits across multiple genres. After cardio, bonus abs and stretch.

Monday: 7:15 pm - 8:30 pm | Rec 3

**Instructor:** Helena Sundberg  
**Phone:** 386-427-8407  
**Email:** [helenarsundberg@gmail.com](mailto:helenarsundberg@gmail.com)

### JAZZERCISE



Are you ready for the ultimate confidence infusion? Channel your inner pop diva in the original dance party workout for all ages and fitness levels!

Blending dance with Pilates, yoga, kickboxing and strength training, one 55-minute session can burn up to 800 calories! The results? Long, lean muscles and an undeniable mood boost!

**Your first FOUR classes are FREE!**  
**Come dance with us!**

Monday: 6:30 pm - 7:30 pm | Rec 6  
Tuesday & Thursday: 6:15 pm - 7:15 pm | Rec 5  
Saturday: 8:30 am - 9:30 am | Rec 3

**Instructor:** Tammi Barboza  
**Phone:** 808-497-4299  
**Email:** [jazzerciseleeward@gmail.com](mailto:jazzerciseleeward@gmail.com)

### ZUMBA®



Zumba® is a fun dance fitness class that is done to a background of upbeat international rhythms, mainly Latin and pop music.

Come and join the Zumba® party with us. It's fun and easy to follow, without you realizing you are working out.

Wednesday: 6:00 pm - 7:00 pm | Rec 3  
Saturday: 10:00 am - 11:00 am | Rec 3

**Instructor:** Noriko Mukk  
**Email:** [noriko.zumba@gmail.com](mailto:noriko.zumba@gmail.com)

Drop-in Fee: \$5 MTA Members | \$6 for non-members

### ZUMBA® GOLD



**Zumba® GOLD** - Combining Latin and International music, GOLD is a low-impact dance fitness designed for active older adults, people with mobility issues, and anyone who is new to Zumba. Easy-to-follow moves that promote cardio health, coordination,

balance, stronger bones and muscles. The moves are easier on the joints. If needed, chairs are available for a great seated workout (Chair Zumba). No registration needed. Just come, pay at the door, and join in the fun!

**GOLD** | Tuesday: 10:30 am - 11:30 am | Rec 3  
**Zumba®** | Wednesday: 9:30 am - 10:30 am | Rec 3

**Email:** [sherylfitness808@gmail.com](mailto:sherylfitness808@gmail.com)  
[www.sherylfitness.com](http://www.sherylfitness.com)

Drop-in Fee: \$5 MTA Members | \$6 for non-members

**TENNIS**

Get active and have fun with tennis! Players of all levels are welcome - we'll guide you through getting started with the right equipment, learning the rules of play, and playing for fun, or on a competitive level. All lessons are held at Rec 3.



**TENNIS WITH RICK AQUINO**

Tuesday: 3:00 pm - 9:00 pm\*  
Thursday: 3:00 pm - 9:00 pm\*  
Saturday: 9:00 am - 9:00 pm\*

Phone: 808-486-5270



**TENNIS WITH RICH SOTELO**

Mon, Wed, Fri, Sun:  
7:00 am - 9:00 pm\*  
Group & Private Lessons Available.  
By Appointment Only.

Email: tennisuer@gmail.com

**ROLL YOUR PAIN AWAY**



Open to all ages. Alleviate the symptoms of common musculoskeletal ailments with the Fascianation Method of self-myofascial release. Developed by Founding Members of the Fascia Research Society, this class will enable you to understand why you have aches and pains and how to mitigate those pains with simple and effective techniques using a Fascinator Roller. Improve your flexibility, posture and circulation while learning about the largest organ system in the body...the FASCIA.

Tuesday: 9:00 am - 10:00 am | Rec 3  
Wednesday: 7:15 pm - 8:15 pm | Rec 3

Drop-ins are welcome.

**Instructor: Anthony Chrisco**  
Phone: 808-227-6221  
Email: achrisco16@gmail.com  
www.thefascinator.com

Bring a yoga mat and water and wear comfortable exercise clothes. Read our incredible testimonials at: www.thefascinator.com.

Cost per class: \$15 MTA Members | \$16 non-members

**HAWAIIAN KAJUKENBO ASSOCIATION**



A self-defense system incorporating Karate (Ka), Judo and Jujitsu (Ju), Kenpo (Ken) and Chinese Boxing (Bo). The program focuses on vital life skills including respect,

discipline, focus, concentration, and confidence for the entire family.

**LITTLE DRAGONS**

Monday & Wednesday: 5:30 pm - 6:00 pm | Rec 5

**YOUTH**

Monday & Wednesday: 6:00 pm - 7:00 pm | Rec 5  
Saturday: 9:00 am - 10:00 am at Rec 5

**ADULTS**

Monday & Wednesday: 7:00 pm - 8:30 pm | Rec 5  
Saturday: 10:00 am - 11:00 am | Rec 5

**WEAPONS**

Saturday: 8:00 am - 9:00 am | Rec 5

Contact: Jane Iversen  
Phone: 808-626-2807 | 808-222-3860  
www.hawaiiankajukenbo.com

**VOLLEYBALL SUMMER TRAINING PROGRAM**



In this high-quality training program, players will learn fundamentals & strategies to improve overall skill & introduced to organized volleyball. Program will be coached by award-winning Coaches and former university players.

Beginner Middle School (Co-Ed) Grades 6-8  
Less than one year organized volleyball experience

July 9, 2024 - September 3, 2024  
Tues & Thurs: 5:00 pm - 7:00 pm at Rec 7 Gym

For more detailed info, please email:  
milianiiboysvolleyball@yahoo.com

Cost: \$350 per player

**PICKLEBALL | KYLE PARADES**

**GAMEON PICKLEBALL INSTRUCTION**



Know More, Move Better, Play Better! PPR certified instructors in laser-focused classes that teach successful Pickleball Techniques + Doubles tactics to play confidently and safely in both recreational and competitive settings.

Wednesday: 7:00 pm - 9:00 pm  
Rec 3 Pickleball Courts 1 & 3

**Instructor: Kyle Parades**  
Phone: 808-554-6533

**K-POP DANCE | CREATIVE MOVEMENT | BALLET**

**K-POP DANCE** - K-pop, short for Korean pop music, has been rising to fame internationally in recent years thanks to the popular boy group, BTS. K-pop consists of a wide variety of music styles, accompanied by unique choreography that fans often enjoy learning for fun. In this class, we will be learning choreography from a handful of K-pop songs, some of which will be student requests!

**Instructors: Chloe and Ellie Z**  
Saturday: 12:15 pm - 1:15 pm | Rec 1

**CREATIVE MOVEMENT** - Beginning level of exploration with practice of the basic dance elements and pre-ballet for ages 3 to 5. Let your child discover the beauty and joy of self-expression through dance.

Friday: 3:00 pm - 4:00 pm | Rec 1  
Saturday: 9:00 am - 9:45 am | Rec 1



**BALLET** - Ballet is a beautiful system of body awareness. It develops an adaptive body that can move with both strength and grace.

**Ballet 1 (Ages 6 to 9)**  
Friday: 4:00 pm - 5:00 pm | Rec 1  
Saturday: 9:45 am - 10:45 am | Rec 1

**Ballet 2/3 (Ages 9 to teens)**  
Friday: 5:00 pm - 6:30 pm | Rec 1  
Saturday: 10:45 am - 12:15 pm | Rec 1

**Instructor: Laura Kunimura**  
Phone: 808-228-3743 | Email: danceisle@aol.com  
www.danceisland.net

**YOGA | JUDY KOSAKA**



Relaxing Vinyasa Flow yoga class to encourage flexibility and increased range of motion. Wear comfortable clothes and bring your personal yoga mat. No registration or prior yoga experience required.

Thursday: 6:00 pm - 7:00 pm | Rec 6  
**NO CLASS 8/1/24**

**Instructor: Judy Kosaka**  
Phone: 808-371-8006  
Email: bewell808@yahoo.com  
www.getfit808.com

Cost per class: \$10 per class

**MINDFULNESS KIDS YOGA**



This class focuses on having fun while learning basic yoga movements, helping to understand and inspire the inner-self, practice mindful exercises with proper breathing techniques to increase strength, flexibility, and balance. Increase focus and self-confidence also benefits child's academics and athletics. Help improve body and mind growth in a peaceful and healthy way!

This class also includes mindfulness activities, and arts & crafts.

Come join us to experience Mindfulness Yoga! This class is designed for children ages 4 - 11 years old. Please feel free to contact me for more information.

Wednesdays: 4:30 pm - 5:30 pm | Rec 6

**Instructor: Maki Shin**  
Instagram: kapilina\_yoga  
Phone: 808-230-6767  
Email: kapilinaoyagahawaii@gmail.com

**FREE TRIAL FOR FIRST CLASS!**  
Cost per class: \$14 MTA Members | \$15 non-members

**SELF-CARE YOGA MORNINGS**



A yoga class for all levels to take some time for yourself, connect with your body and cultivate inner peace and balance. This class will make you stronger, will release the tension stored in your body and calm your busy mind. Asana (poses) breath work, meditation and many self-care practices will help you regain your inner balance, "fill your cup" and feel supported.

Tuesday & Thursday: 9:00 am - 10:00 am | Rec 1  
**Resume 8/6/24**

**Instructor: Evi Paraskeva**  
Email: yogimindfulmama@gmail.com

Cost per class: \$10 MTA Members | \$12 non-members

SEE PAGE 20 FOR FACILITY ADDRESS & INFORMATION.

PLEASE CONTACT INDEPENDENT CONTRACTORS FOR MORE INFORMATION ABOUT THEIR CLASSES.

# MTA JOB OPPORTUNITIES

## BUILDING MAINTENANCE PERSON (FULL-TIME UNION)

**Starting Pay: \$16.52/hr** | Performs all of the Building Maintenance Worker's duties; (i.e.) janitorial, buffing, mopping, empties pet waste stations and other assigned duties; operates various maintenance equipment; use proper cleaning materials and industrial maintenance methods. High school diploma or general education degree (GED); knowledge in related experience and/or training; or equivalent combination of education and experience required. Must be available to work day shift - Tuesday through Saturday.

## GROUNDS MAINTENANCE PERSON (FULL-TIME UNION)

**Starting Pay: \$16.52/hr** | Responsible for maintaining MTA's landscape and common areas. Operates various types of equipment such as riding mowers and portable power tools (grass trimmers, leaf blowers, sprayers and other grounds maintenance equipment). Operates and/or repair irrigation system. Mows, trims, weeds and edges landscape; prunes and/or shape shrubs & trees. Apply herbicides, insecticides and fertilizer on landscape, shrubs and trees. Knowledge and understanding of the growth cycle of plants, grass, trees and shrubs. One to three (1-3) years groundskeeping experience required. Must have a valid driver's license.



## BARISTA (PART-TIME)

**Pay Range: \$14.00 - \$19.60** | Provide customers with prompt service and quality products while maintaining a clean and friendly environment. Previous barista or food service experience preferred. Must be flexible during weekdays and must be able to work weekends & holidays.

## LIFEGUARD (PART-TIME)

**Pay Range: \$16.37/hr - \$26.19/hr** | Monitors swimming area activities to prevent accidents and provides assistance to swimmers and members. Must possess current American Red Cross Lifeguard Training, Standard First Aid, and CPR. Lifeguard training available through MTA.

## SWIM INSTRUCTOR (PART-TIME)

**Pay Range: \$16.65/hr to \$26.64/hr** | Provide instruction of swimming lessons and other water related programs and activities.

## MEMBER SERVICES COORDINATOR 1 (PART-TIME)

**Pay Range: \$14.00/hr - \$19.60/hr** | Provides customer service to MTA members and their guests. Previous customer service preferred. Must be flexible during weekdays and must be able to work weekends & holidays.

# WANT TO APPLY?

SUBMIT AN EMPLOYMENT APPLICATION OR SEE A LIST OF CURRENT JOB OPENINGS AT:  
[MILILANITOWN.ORG/EMPLOYMENT](http://MILILANITOWN.ORG/EMPLOYMENT)

Lic. No. BC36339

**HUA CONSTRUCTION INC.**  
Interior & Exterior Construction

Commercial • Residential Remodeling  
Renovations • Additions • Cabinet • Marble  
Kitchen & Bathroom • Electrical • Plumbing

FREE ESTIMATE, QUALITY ASSURANCE

YUN HUA LIN  
**(808) 232-4121**  
Email: [huaconstructioninc@gmail.com](mailto:huaconstructioninc@gmail.com)  
[www.huaconstructionhi.com](http://www.huaconstructionhi.com)

See our ad on page 25 for a special offer!

**Quality Painting**

Residential & Commercial Painting  
Interior & Exterior Painting  
Carpentry & Drywall Repairs  
Concrete Restoration

FREE ESTIMATES

**808-625-9411**  
[cbqpainting.com](http://cbqpainting.com)

Bonded & Insured • Lic #C-26872

LEARN 'RIGHT FROM THE START'

# VOLLEYBALL CLINICS AND CAMPS

All ages (7-18) all skill levels welcomed!  
We offer clinics for all levels from our Beginners "FUNDAMENTALS" Program to Club Team Programs. No Experience needed.

- Passing
- Setting
- Hitting
- Ball Control

Clinics in Mililani at Hanalani School. Please TEXT us at **673-3151** or visit [pinnaclevolleyballhawaii.com](http://pinnaclevolleyballhawaii.com)

**PINNACLE VOLLEYBALL**

Proudly Serving the Community with Sunshine and Aloha

OHAI Party RENTALS

- Tents
- Tables
- Chairs
- Food Warmers
- Bistro Lights

We'll do the hard part, you do the partying!  
Backyard "Pā'ina" Style • Set-Up & Break-Down

real Real Broker, LLC  
Hawaii | 808-23337

Buying or Selling Your Home?  
The trusted guidance of a local, friendly Realtor® makes a world of difference.

REALTOR ASSOCIATE  
CRS, MRP, AHW, e-PRO  
RS-75568

**Darnelle Travis (808) 625-5057**  
[SunshineAlohaHomes@gmail.com](mailto:SunshineAlohaHomes@gmail.com)  
[OhaiPartyRentals@gmail.com](mailto:OhaiPartyRentals@gmail.com)

Reliable • Professional • On-Time Service

# SAL'S GARDEN CARE & HOME REPAIR

Since 1984 Insured  
Up to \$1500 Oahu & Big Island

**GARDENING:** Scheduled Maintenance & Single Jobs  
**IRRIGATION:** Design, Repair & Installation  
**MAILBOX:** Replace, Repair & Install  
**HANDYMAN SERVICES:** Carpentry, Painting, Tiles & Masonry

[SalBallesteros@aol.com](mailto:SalBallesteros@aol.com) **(808) 348-0362**

# JAZZERCISE

Monday • Tuesday • Thursday • Saturday  
See Contractor Class listing for more information

**YOUR FIRST FOUR CLASSES ARE FREE!**  
JUST SHOW UP AND DANCE WITH US!

Instructor: Tammi Barboza  
808-497-4299 | [jazzerciseleeward@gmail.com](mailto:jazzerciseleeward@gmail.com)

Take care of your Air with NS Air

# NS AIR CONDITIONING

Service • Maintenance  
Installation • Replacement  
Residential/Commercial

808-520-1034 | Fax: 808-637-4581 | Email: [nsairsair.net](mailto:nsairsair.net)

Invested Educational Academy

# INVESTED EDUCATIONAL ACADEMY

Locally owned & operated tutoring for our future leaders.

Math  
Chemistry  
English  
Physics  
Statistics  
College Prep & More!

808 428 1595

BOOK NOW

SCAN ME

**TIME TO PAINT YOUR HOME?**

**FORD PAINTING PROFESSIONALS**  
RESIDENTIAL • COMMERCIAL • LICENSED • INSURED

*"It Costs Less to do it Right the First Time!"*

• Residential & Commercial • Remodeling & Repairs  
• New Construction • Garage Floor Coatings & More!

**FREE ESTIMATE \$1000 OFF**  
+\$200 OFF FOR VETERANS | -\$150 OFF FOR SENIORS

**808-216-0272**  
www.fordpaintingprosinc.com  
Licensed & Insured Fax: 808-626-9389 Lic.#C-25781

See ad on page 21

NEW KINE ALL DAY TIME

**kokua korner mart**

The BEST Deals on Candy, Snacks & More

**OPEN**  
MONDAY TO FRIDAY  
7:30AM TO 4:30PM

Mililani Tech Park  
175 Kahelu Av. Unit #1 Mililani, HI 96789  
@kokua.korner

**TUTORING**  
Individualized Instruction • References Available

**JIMMY CASTRO**  
DBA LAA KEA TUTORING SERVICE

**MATH • SCIENCE • SAT/ACT**

**808-295-2574**  
jcastro808@gmail.com  
HAWAII TUTOR.NET

**OAHU DOORS**  
License #C-3227

**Ace Installation and Repair**

- Broken Springs & Cables Replaced
- Residential Garage Doors & Openers
- Carport Enclosures
- Servicing All Makes & Models

**(808) 625-5759**  
oahugaragedoors.com

GENIE  
Amarr  
Residential  
LiftMaster  
MasterCard VISA

**Mililani Town Florist**

**808-625-2445**  
Locally Owned & Operated

Lei & Haku • Funeral & Church Arrangements •  
Birthday • Anniversary • Holiday Arrangements •  
Wedding & Prom • Tropical Flowers

Free Delivery In Mililani

Mililani Town Florist Website

SCAN ME

www.MililaniTownFlorist.com

**State Farm**

**Proud to support the neighborhood**

Being a good neighbor means being there for my community. As your local State Farm® agent, I'm ready to help whenever you need me. Give me a call.

I am a proud third generation Mililani resident and MHS Trojan. Conveniently located in the Town Center of Mililani, my team and I look forward to meeting you.

Brandon Kim Insurance Agency Inc  
**BRANDON KIM**  
State Farm Agent  
95-1249 Meheula Pkwy., Suite 140  
Mililani, HI 96789-1788

**Bus: 808-627-0597**  
brandon@agentbrandonkim.com  
www.agentbrandonkim.com

Like a good neighbor, State Farm is there.®

**MO'S PAINTING, LLC**  
LIC# CT-38446

FREE ESTIMATES  
RESIDENTIAL  
COMMERCIAL  
LICENSED  
INSURED  
30+ YEARS EXPERIENCE

**(808) 330-8285**  
MosPainting2020@gmail.com

**HOUSEPROUD INC**  
Cleaning Services Since 1982

Residential • Commercial • Vacation Rentals

Qualified professionals who take great pride in our work all of which is **GUARANTEED!**

We work to your satisfaction!

Member of the BBB Fully Insured

Call **808-623-8185**

Best to email: scorio2175@gmail.com

First time service gets 5% discount on a minimum of \$135. Hire us for work and refer a customer and receive \$20 bonus if we are hired.

houseproud.com

**R-MAN PAINTING**  
Lic. #C-31989

Commercial • Residential  
High Rise • Townhomes  
Licensed & Insured

**FREE ESTIMATES**  
**(808) 927-8339**  
rman428@gmail.com

**Robert Man**  
Owner

**INLINE CONSTRUCTION**  
Licensed (I.C. #C-29948) Insured  
*Building Dreams One Home at a Time*

**Specializing In...**

- Additions
- Renovations
- General Home Repairs
- Interior & Exterior Painting
- Kitchen & Bath Remodels
- Plumbing & Electrical Services

For a Free Estimate Contact Roger  
**(808) 368-5628**  
roger\_inlineconstruction@yahoo.com  
Mililani Business Owner  
**INLINE-CONSTRUCTION.COM**

# TEEN DEBIT CHECKING

\$0 MONTHLY SERVICE FEE...  
\$0 OPENING DEPOSIT...  
AND \$0 MONTHLY BALANCE REQUIREMENT!

AN ACCOUNT DESIGNED FOR AGES 13 TO 17.

INCLUDES FREE SERVICES LIKE ONLINE BANKING, MOBILE APP, SNAPDEPOSIT, INSTANT ISSUE CARD, TRANSFERS, AND ACCOUNT ALERTS...



# BOOM!

WITH OUR APP, ADULTS CAN MONITOR THEIR TEEN'S SPENDING. TURN OFF THEIR CARD IF SPENDING GETS OUT OF HAND, SHUT DOWN THE CARD IF THEY LOSE IT, SET LIMITS ON HOW MUCH THEY SPEND, OR LET THEM SPEND MONEY ONLY IN A CERTAIN ZIP CODE.

OPEN AN ACCOUNT AT  
[PEARLHAWAII.COM](http://PEARLHAWAII.COM)



 **PEARL HAWAII**  
FEDERAL CREDIT UNION Upgrade You.

[pearlhawaii.com](http://pearlhawaii.com) | 808.73.PHFCU (808.737.4328) | WAIPIO | EWA | AIRPORT | PEARL HARBOR | HONOLULU | WAIANAE

\*If opening an account at a branch, please bring your teen's social security card. No opening/minimum deposit. Certain conditions and restrictions may apply. An adult (the joint account owner) will be responsible for all transactions, fees, and overdrafts that occur. Must be aged 13 to 17. Federally insured by NCUA.